

REACH

HIGHER

YEOVIL COLLEGE
UNIVERSITY CENTRE
PROSPECTUS 2026



**SCAN HERE TO VIEW
THE 2026 DIGITAL
UNIVERSITY CENTRE
PROSPECTUS.**

WELCOME





MARK BOLTON
CEO & PRINCIPAL

Whether you're progressing directly from college or sixth form, or returning to education after a break in your career, we look forward to welcoming you to our supportive and diverse student community.

At Yeovil College University Centre, we are proud to offer a range of practical and academic qualifications right in the heart of Yeovil, designed to support your next career steps. Our University Centre provides a genuine alternative to traditional universities, allowing you to pursue higher-level and professional qualifications in a personalised setting. Our qualifications are crafted with input from local employers and industry needs and are delivered flexibly to accommodate the busy lives of real people.

Yeovil College University Centre is continually evolving, adding new qualifications to fulfil the demand of the regional labour market. We offer a range of qualifications from Higher National Certificates (HNCs) at Level 4 to full Bachelor's Degrees at Level 6, with options to study full-time or part-time, enabling you to balance your studies with other commitments.

CONTENTS

Welcome	3
Sharing Our Strength & Benefits	4
Qualifications Map	5
Why Choose YCUC?	6
Community Inspired	7
Focused Wellbeing	8
Supporting Your Future	9
Choosing a Study Programme	10
Entry Requirements	11
How To Apply	12
Financial Support	13
Supportive Study	14
Invested In You	15
Unrivalled Ambition	16
Driving Innovation Through Infrastructure	17
Higher & Degree Apprenticeships	18
Access to Higher Education	18
Our University Centre Offer	19 - 21
Tuition Fees	22
Protecting Students' Rights	23

CONTACT DETAILS

-  01935 845454
-  university.centre@yeovil.ac.uk
-  www.ycuc.ac.uk
-  Yeovil College University Centre
-  YeovilCollege
-  YeovilCollege
-  www.ucas.com

SHARING OUR STRENGTHS & BENEFITS

HIGH-QUALITY EDUCATION:

Our dedicated University Centre is committed to delivering an exceptional higher education experience.

EXPERT INSTRUCTION:

Our qualifications are taught by industry experts who benefit from a regular and diverse continued professional development programme.

FLEXIBLE LEARNING:

We offer a flexible learning experience, allowing you to 'step on and off' as your life and commitments change, acknowledging that both personal and professional circumstances can and do change.

WORKING IN PARTNERSHIP

At Yeovil College University Centre, we collaborate closely with prestigious institutions such as the University of Gloucestershire, The Open University, Pearson, and City & Guilds, along with many other professional bodies. This partnership allows us to offer a diverse range of industry-recognised qualifications.

When you study with us, your final qualification will be awarded by one of our esteemed partners, rather than Yeovil College University Centre, just as if you had studied directly with them. We work together as a community to benefit our students, ensuring you have local access to a wide array of high-quality qualifications, excellent teaching, and first-class support services.

PRACTICAL FOCUS:

Our qualifications are designed to be practical and vocationally focused.

CONVENIENT LOCATION:

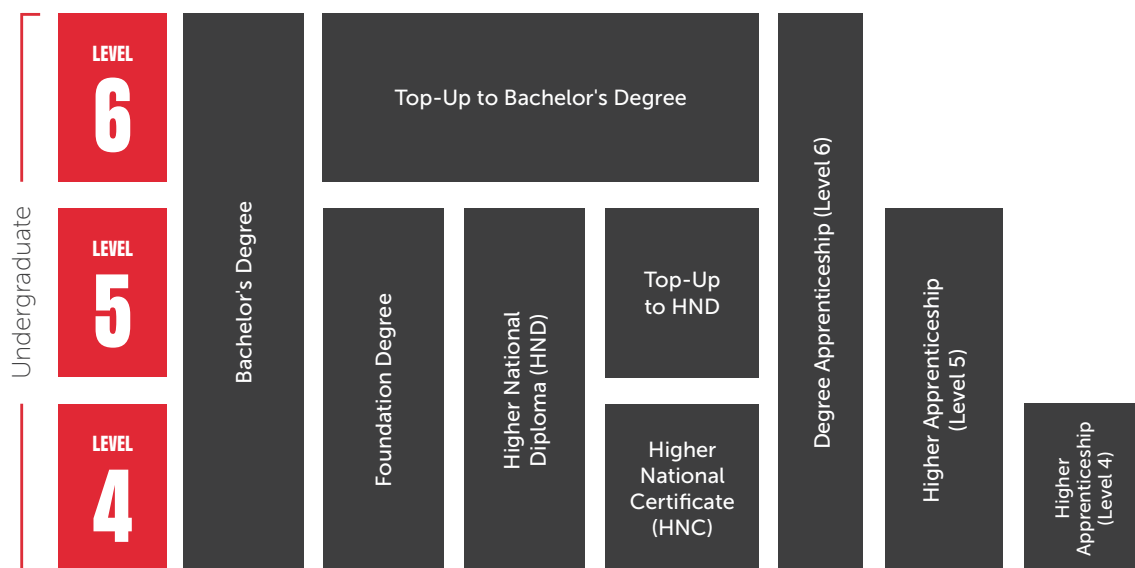
Located in Yeovil, in the heart of South Somerset, there's no need to travel far and wide to study at a higher level.

ACCESS TO HIGHER EDUCATION:

We provide Access to Higher Education qualifications for those who are not yet ready for university-level study, but would welcome a stepping-stone onto the higher education ladder.



QUALIFICATIONS MAP



BACHELOR'S DEGREE

A Bachelor's Degree (often presented as a BA, BSc, BEd or BEng depending on your subject of study) is an undergraduate qualification. This is the qualification that people typically think of when considering a degree programme at a university and it usually involves three years of full-time study, or longer if part-time.

BACHELOR'S DEGREE (TOP-UP)

A Bachelor's Degree (Top-Up) will allow you to build upon your existing Foundation Degree or HND to achieve a Level 6 qualification and help you to stand out in a competitive job market.

FOUNDATION DEGREE

Foundation Degrees are higher education qualifications which equate to the first two years of a Bachelor's Degree and will give you sector-relevant employability skills appropriate for the industry in which you wish to develop your career.

HIGHER NATIONAL CERTIFICATE (HNC) AND HIGHER NATIONAL DIPLOMA (HND)

Higher National Certificates (HNCs) and Higher National Diplomas (HNDs) are vocationally based, work-related higher education qualifications which give you the practical, hands-on experience required to progress your career. A HNC is equivalent to the first year and a HND is equivalent to the second year of a Bachelor's Degree.

HIGHER AND DEGREE APPRENTICESHIPS

Higher and Degree Apprenticeships are qualifications that involve students working towards work-based learning qualifications at Level 4 and above with current, up-to-date content relevant to their sector. Higher or Degree Apprenticeships may include a HNC, HND, Foundation Degree, Bachelor's Degree, or Professional Qualification element to the qualification, depending on the level at which you study.

WHY CHOOSE YEOVIL COLLEGE UNIVERSITY CENTRE?

At Yeovil College University Centre, we pride ourselves on offering a high-quality, learner-focused experience. Our team is made up of passionate professionals who are committed to your success from day one.

EXPERT LECTURERS & INDUSTRY-RELEVANT TEACHING

HIGHLY QUALIFIED STAFF:

Our lecturers are not only academically accomplished but also bring real-world experience from their specialist fields.

INDUSTRY INSIGHT:

Many of our teaching staff have worked directly in the sectors they teach, offering valuable insights and practical knowledge.

CAREER-FOCUSED LEARNING:

We emphasise the practical application of your studies, helping you build the skills and confidence needed for your chosen career.

MENTORSHIP & GUIDANCE:

Our lecturers act as educational mentors, supporting your academic journey and professional development.

SUPPORTIVE & INCLUSIVE LEARNING ENVIRONMENT

PERSONALISED SUPPORT:

We take a learner-centred approach, tailoring support to meet your individual needs and goals.

SAFE & SECURE CAMPUS:

Our facilities are designed to provide a safe, welcoming space where you can focus on your studies.

POSITIVE ATMOSPHERE:

We encourage a culture of collaboration and respect, helping you thrive both academically and personally.

EXCEPTIONAL TEACHING STANDARDS:

Our commitment to high-quality teaching ensures you receive an excellent education.

PROGRESSIVE LEARNING CULTURE:

We continuously evolve our teaching methods and resources to stay ahead of educational trends and learner needs.



COMMUNITY INSPIRED

BELONG AT YCUC

At Yeovil College University Centre, our students share a common goal: to learn, grow, and fulfil their potential. When you join us, you become part of a vibrant, inclusive, and supportive community.

SHARED AMBITION:

- Every student at YCUC is driven by a desire to succeed and make the most of their learning journey.
- You'll be surrounded by like-minded individuals who are equally committed to personal and professional growth.

STUDENT VOICE:

- We actively encourage student feedback to shape your experience.
- Opportunities to become a Student Voice Representative allow you to influence decisions and represent your peers.
- Our Student Union provides a platform for advocacy, events, and student-led initiatives.

PEER-TO-PEER SUPPORT:

- Build meaningful connections with fellow students through study groups, mentoring schemes, and collaborative projects.
- Learn from each other's experiences and support one another both academically and socially.

CLUBS, SOCIETIES & EVENTS:

- Choose from a variety of clubs and societies that match your interests and passions.
- Enjoy downtime with peers in a relaxed and engaging environment.

CELEBRATION:

- Celebrate your achievements in style at our formal Graduation Ceremony, sharing the moment with friends, family, and lecturers as you transition from graduand to graduate.

FOCUSED WELLBEING

At Yeovil College University Centre, we place a strong emphasis on the wellbeing of our students. We understand that a supportive and nurturing environment is crucial for academic success, personal growth and a fulfilling experience. Here are some of the ways we promote wellbeing:

WELLBEING SERVICES:

We offer a range of mental health services to support students to manage their own stress, anxiety, and other personal challenges.

PHYSICAL HEALTH:

Staying active is key to maintaining overall wellbeing. We provide access to a gym and fitness centre (at a very small annual charge), sports clubs, and wellness programmes to encourage a healthy lifestyle.

SOCIAL CONNECTIONS:

Building strong social connections is an important aspect of wellbeing. We organise various social events, clubs, and societies where you can meet like-minded individuals, make new friends, and create lasting memories.

ACADEMIC SUPPORT:

Our academic support services are designed to help you succeed in your studies. We provide a package of resources you need to thrive academically, right from the outset.

SAFE & INCLUSIVE ENVIRONMENT:

We are committed to creating a safe and inclusive environment for all students. Our policies and practices ensure that everyone feels respected and valued, regardless of their background or identity.

FINANCIAL SUPPORT:

Financial stress can significantly impact wellbeing. We offer support to help our students to access a range of loans and financial support that they may be entitled to.



"I cannot explain how grateful I am for my personal experience here at Yeovil College. I had no idea how much this experience would have helped me grow and I discovered I was not alone. I have learnt many lessons that I will always treasure in my heart."

Francesca Manca
Level 5 HND Business

SUPPORTING YOUR FUTURE

At Yeovil College University Centre, we are dedicated to each and every one of our students, ensuring you are set up for success. Whether you're embarking on a new career or aiming for a promotion, we are committed to preparing you for the workplace by the time you graduate.

Each qualification includes a customised support programme, which may feature:

MASTERCLASSES AND GUEST LECTURERS:

Benefit from insights and networking opportunities with relevant industry visitors and guests.

WORK AND INDUSTRY PLACEMENTS:

Gain practical experience with work and industry placements to support your career journey.

ADDITIONAL PROFESSIONAL QUALIFICATIONS:

Enhance your career prospects with the option to complete additional professional qualifications.

EXPERIENCED TUTORS:

Learn from tutors with extensive industry experience.

FIELD TRIPS:

Participate in field trips that are relevant to your qualification.

PRESENTATIONS:

Exhibit, showcase, and present your work and research to a wider regional audience.

SKILL DEVELOPMENT:

Develop essential analytical and presentation skills.

PROJECTS:


Engage in real time projects, assessments, and live briefs.

EMPLOYABILITY SKILLS:

Build key employability skills to ensure you are ready for the job market. We are here to support you every step of the way, making sure you are well-prepared for your future career.



CHOOSING A UNIVERSITY LEVEL STUDY PROGRAMME



When selecting a university-level study programme, the first step is to decide which qualification you want to pursue. There are various types of qualifications available, ranging from one-year Higher National Certificates to full Bachelor's Degrees, and everything in between.

You might opt to complete your qualification in one continuous stretch, or you could earn your qualification in stages. This way, you have multiple opportunities to either pause or progress to the next level. For example, you might choose to start with a Foundation Degree and then 'top up' to a full Bachelor's Degree.

FINDING THE RIGHT BALANCE

When deciding between full-time and part-time study, it's crucial to consider your on-campus requirements and how it might fit into the rest of your life. For instance, some full-time courses at Yeovil College University Centre may only require one day a week on campus, while others are spread over multiple days. Similarly, some part-time courses might only have evening classes, whereas others may require daytime attendance.

Balancing life and study can be challenging, but with the right approach, it's entirely manageable. Before selecting your qualification preference, consider time management, learning preference, support systems, self-care, organisation and commitment. We encourage and support students to implement strategies to help them to effectively manage their studies whilst maintaining a balanced and fulfilling life.

ENTRY REQUIREMENTS

WHAT ARE ENTRY REQUIREMENTS?

All of our qualifications have a selection of entry requirements which can be found on our website. Entry requirements are just one part of the admissions process. We also interview applicants to ensure we're getting the full picture of someone's suitability for the course.

ARE ENTRY REQUIREMENTS DIFFERENT FOR PEOPLE AGED 21+?

Yes, for many of our qualifications we will gladly accept applications from people who will be aged 21+ when their course starts, who might not hold the formal qualifications we'd normally ask for but have alternative relevant experience. If you are over 21 and are interested in applying but are unsure whether you've got the right qualifications or experience, we'd encourage you to get in touch.

WHAT ABOUT GCSE ENGLISH AND MATHS?

Lots of our qualifications require you to hold GCSE English and Maths, or equivalent. When we say 'or equivalent' that might be something like a Functional Skills Level 2 qualification. For some courses, these qualifications are desirable, but not essential. We offer both GCSE and Functional Skills courses at the College, so it might be that we can support you to get your GCSE (or equivalent) before your programme starts. In many cases, you are able to study the GCSEs free of charge, if you don't already have them.



"Ever since visiting a TV Studio in school I've always loved being behind the camera, it allows me to express how I feel and be creative. This inspired me to pursue a career down the digital media pathway and led me to studying Level 2 through to my Level 6. All the staff are always there for you, push you to try new things and want you to achieve your best. This has been a life changing experience."

Hugo Goncalves

BA (Hons) Digital Design & Media (Top-Up)

HOW TO APPLY

FULL-TIME STUDY

If you're applying for a full-time course, you'll need to use the UCAS website. UCAS (Universities and Colleges Admissions Service) manages applications for most full-time courses in the UK and provides plenty of helpful information on how to apply.

If you're currently in sixth form or college, staff members such as your tutor, a Careers Advisor, or a dedicated university applications staff member can assist you with your application.

For adults returning to study, the Yeovil College University Centre team are available to offer advice and guidance on the application process. Please reach out to us for any support required.

PART-TIME STUDY

If you're applying for a part-time course then you won't use UCAS. Instead, you need to complete a part-time application form. Email university.centre@yeovil.ac.uk or call 01935 845454, and we will send you a copy. Alternatively, you can download a copy from our website.

APPLICATION TIMELINE

Applications open in early September, one year before your course will begin. In mid-January (about nine months before the course is due to commence) there is a date called the 'equal consideration deadline'. All applications received by this date must be considered equally by universities and colleges. Visit www.ucas.com for more information.

With the vast majority of qualifications, Yeovil College University Centre will continue to consider applicants right up until the start of September, provided there are spaces left on the course. Occasionally, we run courses which start in-year. Information about these will be available via our website and social media.

FURTHER INFORMATION

Reach out to our friendly team by emailing university.centre@yeovil.ac.uk or calling 01935 845454. You can also visit the Yeovil College University Centre section of our website for more useful information.



FINANCIAL SUPPORT

We understand that financial considerations are an important part of the university application decision-making process, and we are here to offer support.

WHAT DO YOU NEED TO CONSIDER?

There are two main things to consider when thinking about finance. The first is how you will cover the tuition fee cost of your course. For Yeovil College University Centre courses, you can find tuition fee amounts on our website, in 'Policies and Reports', in the Yeovil College University Centre section.

The second is how you will cover your living costs – rent, bills, and other outgoings.

TUITION FEE LOAN

Many students are able to get a Tuition Fee Loan from Student Finance to cover their tuition fees. For full eligibility criteria head to www.gov.uk/student-finance. This is money which is paid directly from Student Finance to your university or college.

MAINTENANCE LOAN

Many students are able to apply for a Maintenance Loan from Student Finance to help support with living costs during their studies. The amount you'll be able to get will depend on a range of criteria, including the course you are studying, where you live, and your household income.

For full eligibility criteria head to www.gov.uk/student-finance.



Discover more about financial support on our website, by scanning the QR code.

REPAYMENT

You will only start making repayments if your income is over the repayment threshold, which is currently £25,000 for students who started a course on or after 1 August 2023 (correct as of September 2025).

If your income falls below the repayment threshold, your repayments will stop and only restart when your income is over the threshold again. Forty years after you're due to start making repayments, any loan plus interest remaining will be cancelled. Interest is chargeable on student loans, at variable rates depending on your circumstances.

For full information about terms, conditions, and repayment head to:

www.gov.uk/student-finance.

EXTRA SUPPORT

If you are a full-time student with children, or you have an adult who depends on you financially, you may be eligible for additional support through a Childcare Grant, Parents' Learning Allowance, or Adult Dependents' Grant. Visit www.gov.uk/student-finance to find out more.



DISABLED STUDENTS' ALLOWANCE (DSA)

DSA is support to help pay the essential extra costs you might have as a direct result of your disability, including a long-term health condition, mental-health condition or specific learning difficulty, such as Dyslexia or Dyspraxia. You don't need to pay these back. Visit www.gov.uk/student-finance to find out more.

SUPPORTIVE STUDY

At Yeovil College University Centre, we are committed to making our programmes accessible to everyone. Our teaching methods and the qualifications we offer are designed to accommodate students of all ages, helping them excel in their studies. We warmly welcome adult learners returning to education and understand the challenges of balancing life commitments with university-level study.

HERE'S HOW WE SUPPORT YOU:

FLEXIBLE LEARNING

We offer qualifications with the flexibility to step on and off as needed, and we also make sure that your timetabled learning hours are as flexible as possible. Many of our courses can be studied full-time or part-time. For instance, full-time study often means just one or two days of teaching per week.

SMALL CLASSES

We maintain reasonably small class sizes to ensure each student feels known and recognised, and not just a number. When you join Yeovil College University Centre, you become part of a close-knit, diverse community.

A DEDICATED SUPPORT NETWORK

Our team is dedicated to helping you succeed and to achieve your goals. We offer a blend of expertise, from pastoral support to careers advice, ensuring all areas are covered.

EXPERT TEACHING

Our team of expert lecturers are well practiced in teaching and understand you might be joining us with varying levels of experience in areas such as academic writing and technological skills. With their support, we are confident each and every one of our learners will have the tools they need to succeed.



"I've been a stay-at-home mum for the past twenty years, volunteering in schools and clubs that my children attended. I've never had a career before but now my children are older, I thought it was my time.

YCUC has been so supportive throughout my journey; I started studying here with the Access to Higher Education programme then moved onto the Foundation Degree and now I'm studying the Bachelor's Degree (Top-Up)! My tutors have been amazing and I'm not sure I would have got through it without them."

Sharon Sangiovanni

BA (Hons) Childhood Studies, Care & Education (Top-Up)

INVESTED IN YOU

At Yeovil College University Centre, we are dedicated to putting you first and finding personalised solutions to make your life easier. We pride ourselves on being friendly, supportive, and entirely student-focused.

HERE'S HOW WE SUPPORT YOU:

WELLBEING AND PASTORAL SUPPORT

Our Student Support Officer is here to help you with organising your workload, building confidence, managing the transition to university-level study, and addressing any wellbeing concerns. They provide a listening ear, practical support, and signposting to additional resources.

CAREERS SUPPORT

We offer expert advice to help you plan your post-Yeovil College University Centre career path and achieve your goals.

ADDITIONAL LEARNING SUPPORT

For students with disabilities, learning difficulties, or long-term health conditions, we provide tailored support to help you excel in your studies. We will advise you on the support available to you at university level.



FINANCIAL SUPPORT

Navigating student loans and other financial matters can be challenging. Our team can help you understand your funding options, including whether you qualify for a Council Tax exemption.

STUDY SKILLS

Whether you're transitioning from a Level 3 course or returning to education after a break, we support you in developing the study skills you need to succeed. All Yeovil College University Centre students have access to our dedicated Study Skills Programme.

LIBRARY, RESEARCH AND REFERENCING

Our Academic Liaison Librarian is available to assist you in finding resources for your assignments and building your confidence in navigating these resources independently.



Scan the QR code to find out more about how we can support you throughout your time with us.



UNRIVALLED AMBITION



In a landmark and historic move for further education in Somerset and North and West Dorset, Yeovil College proudly announced the launch of its brand-new campus transformation. The state-of-the-art facilities promised to offer unparalleled educational experiences to students across the region with advanced facilities, dynamic learning environments, and a commitment to excellence.

DRIVING INNOVATION THROUGH INFRASTRUCTURE

Yeovil College is crafting a cutting-edge estates strategy to deliver a 21st-century learning experience. With a £60+ million investment, our campus will rival the best in the UK. Our goal is to create a blend of formal and informal learning spaces, including multi-purpose collaboration areas, advanced digital rooms, flexible teaching spaces, and virtual reality facilities. We aim to inspire students, staff, and the community to spend more quality time on campus, seamlessly integrating learning, living, and socialising.



£60+ million investment in campus facilities, buildings and teaching environments.



Creative and agile social and study spaces with superior digital connectivity.



Award-winning Institute of Technology (IoT) across Digital, Engineering, Health, Creative, Computing, and Dental, which is the most successful in the UK.



Transformed Engineering & Automotive Engineering departments with a real Lynx Helicopter, state-of-the-art equipment, full-spec'd workshops and cell-tech, EV and Hydrogen.



Digital Dental Technology labs with cutting-edge technology. Currently we are the only university or college in England delivering a Higher Technical Qualification in Dental Technology. (as at August 2025)



Construction Innovation Centre with advanced technology and machinery and workshops to represent the real-world.



Yeovil Institute of Sport (YIS) with a new build, incredible facilities and a champion-focused sports curriculum.



Bespoke workshops and high-quality teaching spaces across all curriculum areas.



Health, Education and Science Centre with leading physical, VR and digital facilities.



Integration of virtual technology, AI, and augmented reality in the curriculum.

HIGHER & DEGREE APPRENTICESHIPS

Our top-level apprenticeship programmes involve students working towards work-based learning qualifications at Level 4 and above with current, up-to-date content relevant to their sector. Higher or Degree Apprenticeships may include a HNC, HND, Foundation Degree, Bachelor's Degree, or Professional Qualification, depending on the level at which you study.

HOW WILL IT BENEFIT YOU?

- You will earn a salary whilst you study.
- Your employer may cover the cost of any fees for you.
- It is common that apprentices are offered a permanent job or a promotion at the end of their programme.
- You may also progress to new roles, such as management or technical specialists.

To explore our range of higher and degree apprenticeships we offer, visit our website, or contact apprenticeships@yeovil.ac.uk.

ACCESS TO HIGHER EDUCATION

Access to Higher Education provides the perfect platform to support adults (19+) to develop a new set of skills, improve confidence and update their foundation knowledge base to support a change of career. It is often used by those people who wish to embark upon university-level study and/or who want a transition year before progressing directly to Yeovil College University Centre, one of our partner universities, or an alternative institution.

Access to Higher Education (HE) aims to give adults with significant life experience a fresh chance at learning and education. It is a nationally recognised qualification representing an alternative to the traditional A Level route to university. As well as giving you the opportunity to gain the academic skills you will need for a higher level of study, Access qualifications aim to support students so that they increase in confidence and develop strong interpersonal skills. At Yeovil College we offer a range of Access to Higher Education programmes, including both on-site and online routes. To find out more or apply, head to <https://www.yeovil.ac.uk/university-centre/access-to-higher-education/>.

FINANCIAL SUPPORT FOR ACCESS TO HIGHER EDUCATION



Visit www.gov.uk/advanced-learner-loan/overview to explore financial support. You may be able to write off your loan if you immediately progress and complete a higher education qualification.



"I was inspired to study the course by my fellow colleagues, and I also wanted to further my academic development. The level of support at Yeovil College University Centre has been amazing, the lecturers are incredible, and I liked the tight knit community. Next, I plan on keeping my knowledge in the classroom, inspiring the next generation of learners with my experience."

Ben Taylor

BA (Hons) Business Management & Strategy

COURSE OFFER

For more information about our courses, including module content and entry requirements, visit our website via www.ycuc.ac.uk.

HND Business

UCAS Code: 2Y1V
Full-time = 2 years
Part-time = 3 years
Awarding Body: Pearson



BA (Hons) Business Management & Strategy (Top-Up)

UCAS Code: J2G5
Full-time = 1 year
Part-time = 2 years
Awarding Body: University of Gloucestershire



FdA Childhood Studies, Care & Education

UCAS Code: 51LK
Full-time = 2 years
Part-time = 3 years
Awarding Body: University of Gloucestershire



BA (Hons) Childhood Studies, Care & Education (Top-Up)

UCAS Code: 62X9
Full-time = 1 year
Part-time = 2 years
Awarding Body: University of Gloucestershire



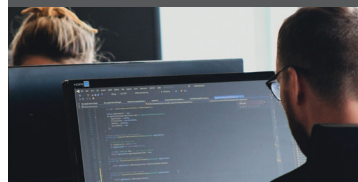
HNC Computing for England

UCAS Code: YCCP
Full-time = 1 year
Part-time = 2 years
Awarding Body: Pearson



HND Computing for England

UCAS Code: YDCA
Full-time = 2 years
Part-time = 4 years
Awarding Body: Pearson



BSc (Hons) Computing (Top-Up)

UCAS Code: BTCP
Full-time = 1 year
Part-time = 2 years
Awarding Body: University of Gloucestershire



HNC Construction (Subject to approval)

Full-time = TBC
Part-time = TBC
Awarding Body: TBC



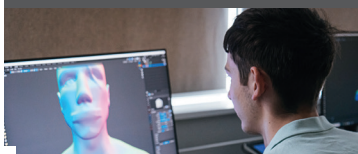
FD Dental Technology

Full-time = N/A
Part-time = 3 years
Awarding Body: The Open University



FdA Digital Design & Media (7 pathways available)

UCAS Code: Various
Full-time = 2 years
Part-time = 4 years
Awarding Body: University of Gloucestershire



BA (Hons) Digital Design & Media (Top-Up) (7 pathways available)

UCAS Code: Various
Full-time = 1 year
Part-time = 2 years
Awarding Body: University of Gloucestershire



FD Engineering (Aeronautical)

UCAS Code: FAER
Full-time = 2 year
Part-time = 3 years
Awarding Body: The Open University



FD Engineering (Mechanical)

UCAS Code: FMEC
Full-time = 2 years
Part-time = 3 years
Awarding Body: The Open University



FD Engineering (Manufacturing)

UCAS Code: TBC
Full-time = 2 years
Part-time = 3 years
Awarding Body: The Open University



CertHE Engineering (Aeronautical)

UCAS Code: CAER
Full-time = 1 year
Part-time = 1.5 years
Awarding Body: The Open University



CertHE Engineering (Mechanical)

UCAS Code: CMEC
Full-time = 1 year
Part-time = 1.5 years
Awarding Body: The Open University



CertHE Engineering (Manufacturing)

UCAS Code: TBC
Full-time = 1 year
Part-time = 1.5 years
Awarding Body: The Open University



YCUC PROFESSIONAL PROGRAMMES

Our suite of professional programmes allow you to upskill and gain a university-level qualification in your particular professional field. Fees for YCUC Professional programmes work slightly differently to other courses – these courses are not typically eligible for HE Student Finance, however, some programmes may be eligible for an Advanced Learner Loan.

Level 4 Diploma in Counselling Practice

Part-time = 2 years
Awarding Body:
Aim Qualifications



Level 4 Diploma in Professional Accounting

Part-time = 1 year
Awarding Body: AAT



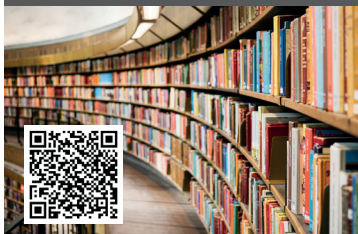
Level 4 Certificate in Laser and Intense Pulsed Laser Treatments

Part-time = 1 term
Awarding Body: VTCT



Level 4 Certificate in Education and Training

Part-time = 1 year
Awarding Body: City & Guilds



Level 4 Award in the Design and Verification of Electrical Installations

Part-time = 1 term
Awarding Body: City & Guilds



"In the past I've struggled with my mental health and as a teenager I was unable to finish studying, now I want to finish what I started. Studying this programme now allows me to work digitally and puts me on the international map. I'm also able to study part-time alongside working which works perfect for me. My experience at Yeovil College University Centre has been first-class. The support is above and beyond and everyone across campus is amazing."

Catherine Howard

FdA Digital Design & Media on the Surface Pattern and Textiles pathway.

TUITION FEES 2026/27

Please note that the information contained in this document is provisional, pending approval by the Office for Students (OfS). This document should be read alongside the Fees Policy, available in the Policies & Reports section of the College website. If you have any questions or concerns around this information, please contact university.centre@yeovil.ac.uk. For full and part-time higher education courses, tuition fees are payable at the start of each academic year. Students continuing on their programme will remain on the same tuition fee for the duration of their course. However, where students progress to a new programme, for example from HNC to HND (top-up), or from FdA/HND to BA (Hons), this is considered to be a new programme and will attract a new programme fee.

PROGRAMME NAME	AWARDING BODY	FULL OR PART-TIME	DURATION (YEARS)	2026-27 TUITION FEE
BA (Hons) Digital Design and Media (all pathways) (top-up)	University of Gloucestershire	Full	1	£8,400
		Part	2	£4,200
BSc (Hons) Computing (top-up)	University of Gloucestershire	Full	1	£8,400
		Part	2	£4,200
BA (Hons) Childhood Studies, Care and Education (top-up)	University of Gloucestershire	Full	1	£8,400
		Part	2	£4,200
FdA Childhood Studies, Care and Education	University of Gloucestershire	Full	2	£8,400
		Part	3	£5,600
FdA Digital Design and Media (all pathways)	University of Gloucestershire	Full	2	£8,400
		Part	4	£4,200
FD Dental Technology	The Open University	Part	3	£5,600
FD Engineering (Aeronautical, Mechanical, or Manufacturing)	The Open University	Full	2	£8,400
		Part	3	£5,600
CertHE Engineering (Aeronautical, Mechanical, or Manufacturing)	The Open University	Full	1	£8,400
		Part*	1.5	Year 1 (Sept-Jun) £5,600 Year 2 (Sept-Feb) £2,520
HND Business	Pearson	Full	2	£7,560
		Part	3	£5,040
HNC Computing for England	Pearson	Full	1	£7,560
		Part	2	£3,780
HND Computing for England (top-up)	Pearson	Full	1	£7,560
		Part	2	£3,780
HND Computing for England	Pearson	Full	2	£7,560
		Part	4	£3,780

Please be aware that fees for BA (Hons) Business Management and Strategy (level 6 top-up) are set by the University of Gloucestershire. Students should therefore consult the University of Gloucestershire's fees information to confirm tuition fees for these courses. Please be aware that additional fees will be charged to repeat / resit units in line with awarding body Academic Regulations and requirements. Additional fees may also be charged for resubmissions dependent upon qualification and awarding body. Please look at the course information pages on our website for details of any programme-specific costs that may be incurred. The Fees Policy is reviewed annually and fees will increase appropriately in line with CPI and market conditions and the basis for the review published and authorised by the Vice Principal Finance and Corporate Services. A rate of inflation of 3% was applied to these fee levels, in line with CPI as at January 2025, before rounding down to the nearest whole number value per credit. Authorised by Vice Principal Finance and Corporate Services in March 2025.

* For courses that are run over partial years (notably, 1.5 year Engineering programmes) the fees charged may vary between years of study

PROTECTING STUDENTS' RIGHTS

There are a range of Policies and Procedures in place to support YCUC students, and ensure all learners are treated fairly. You can always find the most up to date versions of our Policies and Procedures in the 'Policies and Reports' section of our website. The below documents are just some of those you can find, which ensure all YCUC learners are protected, supported, and treated fairly.

The Higher Education Student Charter sets out what YCUC students can expect during their studies, as well as the expectations the College will have of YCUC students in return.

The Higher Education Disability Support for Students Policy sets out support available for individuals with disabilities, learning difficulties, and long-term health conditions who are considering applying to, in the process of applying to, or studying with YCUC.

The Harassment and Sexual Misconduct Policy serves as the College's "single comprehensive source of information" on subject matters relating to incidents of harassment and sexual misconduct, and outlines policies and protocols that learners, staff, visitors, and other individuals must follow if they experience, witness, or become aware of sexual misconduct or harassment.

The Learner Involvement Policy and Procedure outlines the College's commitment to consulting learners on all aspects of the organisation's work, to create high-quality learning experiences.

The Higher Education Terms & Conditions set out all of the terms that form the contract between a student and the College in relation to their studies, at the point that a student accepts their offer.





VISIT US

Yeovil College, Mudford Road,
Yeovil, Somerset, BA21 4DR

CONNECT



GET IN TOUCH



Call

01935 845454



Contact

university.centre@yeovil.ac.uk



Click

www.ycuc.ac.uk