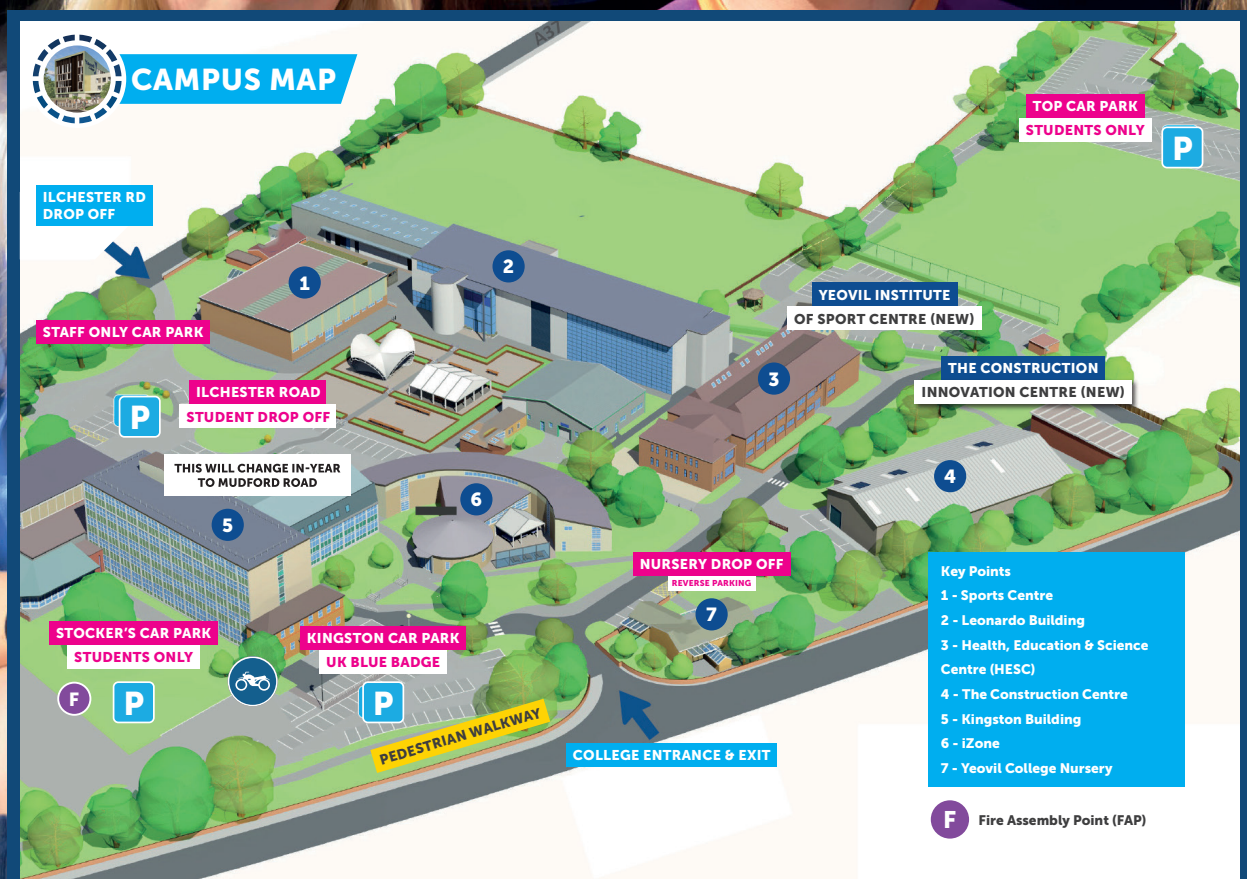

NEW STUDENTS' DAY

INFORMATION PACK

#ChangingLives



www.yeovil.ac.uk



HELLO

A VERY WARM WELCOME TO YEOVIL COLLEGE'S 2025 NEW STUDENTS' DAY!

This day is all about you; the next generation of YC students. We're here to help you confirm your curriculum pathway, ensure you have the support you need, navigate the campus, meet your peers, and get ready for your official start in September.

This Student Information Pack has been carefully put together to answer many of your questions. Inside, you'll find details on transportation, financial support, student services, our policy on personal electronic devices, extracurricular activities (YC Edge and Enrichment), and more. If you have any questions after today's session, our friendly iZone team will be here to help. You can find them at the main reception or contact them via email at iZone@yeovil.ac.uk.

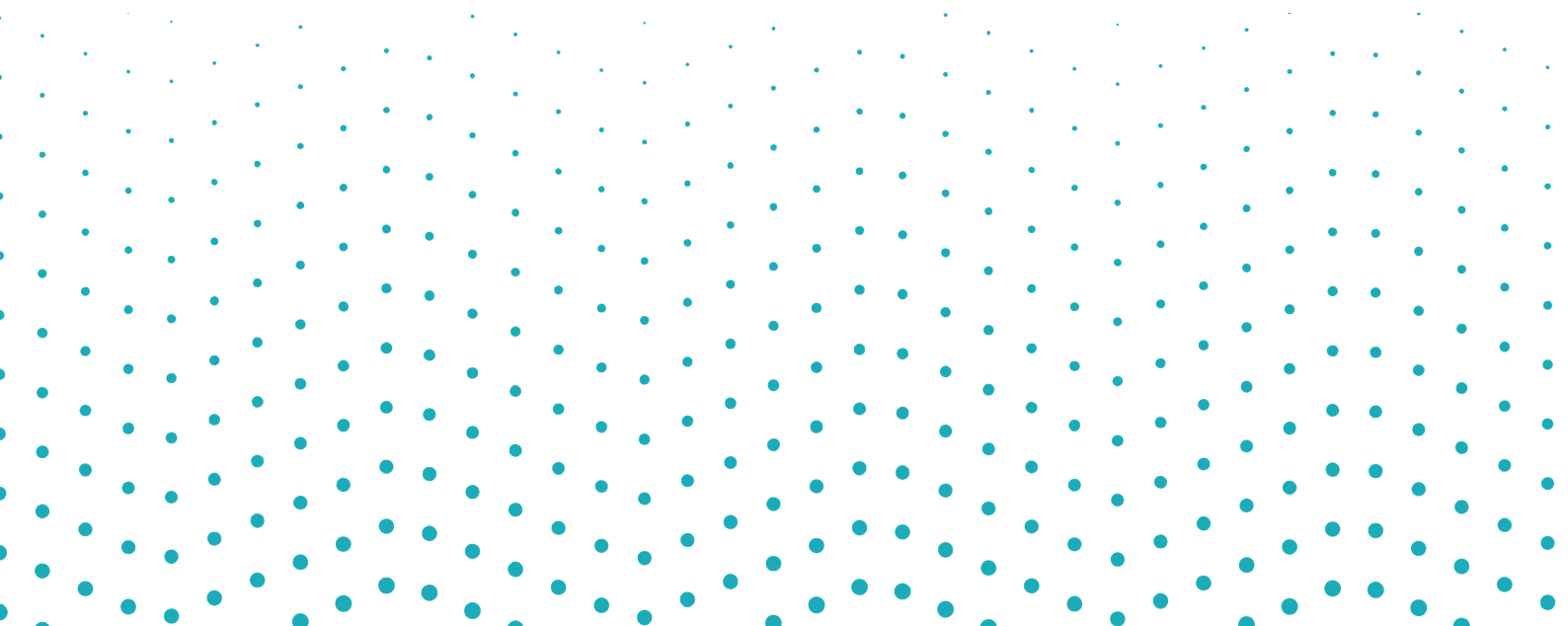
Included in your pack is a campus map to help you locate your teaching and learning environments. Buildings are marked with a letter before the room number to indicate their location. For example, 'A' is the Kingston Building, and 'E' is the Leonardo Building. So, room A110 is in Kingston, and E110 is in Leonardo. If you need directions, feel free to ask any of our staff or student ambassadors who are based around the campus.

Please note, there is no scheduled fire drill today. However, if the fire alarm sounds, your Lecturer will escort you to the nearest Fire Assembly Point (FAP) indicated on your map with the rest of your class; the wider College team will guide you from this point.

If you need extra assistance or feel overwhelmed at any point, please let us know. We're here to support you, whether it's adjusting your study programme, providing a quiet area or offering careers guidance. Our Student Support team is approachable and ready to help; you can find them at our main reception or ask any Yeovil College team member for an introduction.

Remember to enjoy your day and make the most of this brilliant opportunity. We look forward to welcoming you back as a fully-fledged Yeovil College student on the first day of the new term. Your mandatory pre-college introduction day is on **Monday 1st September**, marking the start of your first week at Yeovil College. It is essential that you attend your introduction day, which will set you up for a great first term at College.

Welcome aboard, and we look forward to embarking on this exciting educational journey with you!



AIM HIGH! ACHIEVE GREATER!

Our mantra of aspiration, expectation, and entitlement guides the 'Yeovil Edge' concept, which is unique to Yeovil College. Designed to help students stand out in a competitive market, Yeovil Edge includes enrichment activities that promotes high aspirations, confidence, resilience, and a healthy lifestyle. It supports students in becoming well-rounded individuals, ready to progress into their chosen careers or university paths. Through Edge, we help students develop the knowledge and self-worth needed for success, embracing the mindset that expecting more leads to achieving more.

STRETCHING AMBITION

We believe that expecting more leads to achieving more. Through Yeovil Edge, we set high expectations and work in collaboration with the student and parents (or guardian) to ensure these goals are supported at home. We keep parents informed with regular updates, reports, phone calls and emails, and parents' evenings to discuss progress and next steps. There are no limits to success—we want every Yeovil College student to reach their full potential, even if it feels challenging at times. We will not compromise on expecting the best for our students.

ACHIEVING MORE

We challenge our students to be their very best. At Yeovil College, students are encouraged to maximise their potential, regardless of where their career journey begins. Every student has the right to demand both challenge and enrichment, which is why we offer ambitious programmes for talented A Level students and a comprehensive sports and enrichment programme for all. You will leave Yeovil College rich in skills and knowledge.

FEELING VALUED

A sense of value and pride is central to Yeovil College culture. Students are valued as an individual and never just a number. This sets us apart. From early transition into College to progression onto the next stage of the career journey, students are supported, guided, encouraged, and celebrated.

MAXIMISING POTENTIAL

From the start of the Yeovil College journey, all students are encouraged to think big and dream bigger. We provide the practical infrastructure to give students the best life chances, from our leading campus to our digital technology, state-of-the-art resources, and UK leading teaching environments. We believe that providing the best resources, environments, spaces, and teachers leads to the best career opportunities, and we are proud to play a part in that journey.

COMMUNITY SPIRITED

We ensure that our students develop into well-rounded, educated individuals with a strong sense of community value. We offer opportunities through the Duke of Edinburgh's Award and social action projects, allowing students to interact with diverse groups and networks. They will develop social skills, problem-solving abilities, and improved communication, supporting their time at Yeovil College and their future career steps. Our Ambassador's programme, Student Union and class representatives ensure that the student voice is heard, working hard to develop a harmonious and vibrant College community.

FUTURE READY

Our job is simple: to prepare our students for their next career steps. We have a short time to influence, educate, and instil a sense of purpose and drive within our students, and we maximise this opportunity. Yeovil Edge will help you get ahead of the competition, offering many opportunities to get involved and positioning you for a successful future of your choosing.

ENRICHMENT FOR ALL

Students enjoy dedicated time for enrichment activities that boost confidence, build networks, and develop skills. Our dynamic programme evolves with student interests, ensuring everyone finds something inspiring and valuable.

YC ENRICHMENT IS DIVIDED INTO 5 STANDS:



1

ACADEMIC

University visits, Elevate programme, masterclasses, academic competitions and Olympiads, personal development, interview practice, and Extended Project Qualification (EPQ).



2

SPORT

Football, Rugby, Netball, Badminton, Strength and Conditioning, Fitness, Gym Work, Team Sports.



3

CULTURAL

Book Club, Music Club, Digital, Creative Writing, Film, Literacy Group, Current Affairs Club, VR Club.



4

CHALLENGE

Duke of Edinburgh's Award, Ten Tors Challenge, World Skills, Young Enterprise, National and Regional Competitions.



5

AMBASSADOR

Student Voice, Corporation Representation, Student Union, Social Action, Fundraising, Volunteering, Event Support.



CAREERS SUPPORT & WORK EXPERIENCE

The Careers Hub at Yeovil College is renowned for its success and the positive impact it has on students and their outcomes. We are proud to be 100% compliant with the Gatsby Benchmarks and have recently received the prestigious Matrix Accreditation. We are dedicated to providing strong and independent careers information, advice, and guidance throughout your College journey.

CAREERS

Through the YC Careers Hub, students can expect:

- One-to-one meetings with a dedicated careers professional to discuss next steps and progression.
- Information about further study, apprenticeships, higher education, employment, and supported internships.
- Development of CVs, application forms, personal statements, personal presentation, and interview preparation.
- Employability skills sessions to support our students with their onward journey and success post College life.
- Access to our Grofar Careers platform and the Springpod Ignite Hub.
- Careers-focused Futures Festival available for every student, across all levels of education and training.

WORK EXPERIENCE

As the majority of our study programmes require time with an employer at a work placement, of at least one week, the Careers Hub supports students to experience valuable learning opportunities and provides insight into potential career paths.

Work experience expectations vary depending on your level of study, qualification, and curriculum area; giving you the chance to apply the skills and knowledge gained from your course.

- **Entry Level to Level 3 study programmes:** Typically involve 35 to 150 hours of work experience, completed in a block week or on selected days per week. This will be timetabled and vary depending on your course.
- **T Level qualifications:** Require a minimum of 315 hours (around 45 days) of work experience over two years, integrated into your qualification and timetable.
- **Specific qualifications:** For example, students on the T Level in Education and Early Years must complete a substantial work placement of 750 hours over two years.

At YC Careers Hub we strive to keep students informed with the latest career-related news. We regularly post updates about job opportunities (including part-time work), apprenticeships, university open days and much more on the Careers and Work Experience MyHub page in Teams. We also have our Grofar Platform, which helps students to track their review meetings and access the resource library, build CVs, and record work experience.

STUDENT SUPPORT

We have a full team of people dedicated to providing responsive and flexible support to you. Our number one priority is to ensure every student at Yeovil College has the best chance of success in their future goals. We support students in a number of ways and are committed to providing inclusive education in a safe, welcoming and positive environment.

STUDENT SUPPORT

Students can self-refer to our Student Support team should they require some additional support during their time at College. The team can support with 1:1 and small group sessions focused on sharing techniques and strategies to ensure students can access learning effectively. They are also able to signpost learners and families to external agencies, where appropriate, and can help to facilitate these initial conversations. Our Student Support team incorporates, the Safeguarding team, Campus Support Responders, our Chaplain and our PSHE Tutor. No matter what the situation, our team are here to support without hesitation.

STUDENT COMMUNITY

Embedding the opinions, beliefs and innovations of our students into the Yeovil College campus is critical to our long-term success, which is why we provide students with significant opportunities to contribute to the operations of our College. Students can contribute to our Student Voice group, apply to become a Student Ambassador, be voted in to the Yeovil College Student Union or act on behalf of the student body and contribute to our corporate strategy as a Student Governor.



Student Guide to understand our expectations of learners.



Familiarise yourself with the Yeovil College Student Code of Conduct.



Get to know our online Student Assistance Programme, Wisdom.

WHAT IS WISEPAY?

WisePay is a secure online payment service that allows students and users, to make payments to their college using their debit or credit cards. Payments can include trips, tickets, exam payments, book purchases, clubs, bus payments, sports, or programme costs.

RECEIVING WISEPAY DETAILS

- Following your enrolment with the College, you will receive your login details via email from 'noreply@wisepay.co.uk', to your Yeovil College assigned email address.
- Only one password can be used between learner and parent/guardian when logging in. Please be aware of this when making any password changes.

HOW TO LOGIN TO WISEPAY



1) WisePay App

- Download the app from the App store (it's under education)
- Enter, Organisation Code: **79896343**
- Username – Student ID Number, i.e '689287'
- Password – sent by email to your Yeovil College email address
- Then select 'Next', Registration is now complete
- Click on 'Yeovil College', and then the learner's name
- Followed by clicking 'Payments / Bookings' this will take you to the payment options screen.

2) URL Link

- You can login via the link below where you will be taken to the Colleges' payment page. Please use your personal username and password above to log in. <https://tinyurl.com/YeovilCollegeWisePay>

3) Yeovil College Website

You can login via the WisePay icon on the Yeovil College website www.yeovil.ac.uk the icon appears at the very bottom of the main page of the website.

TOP TIPS

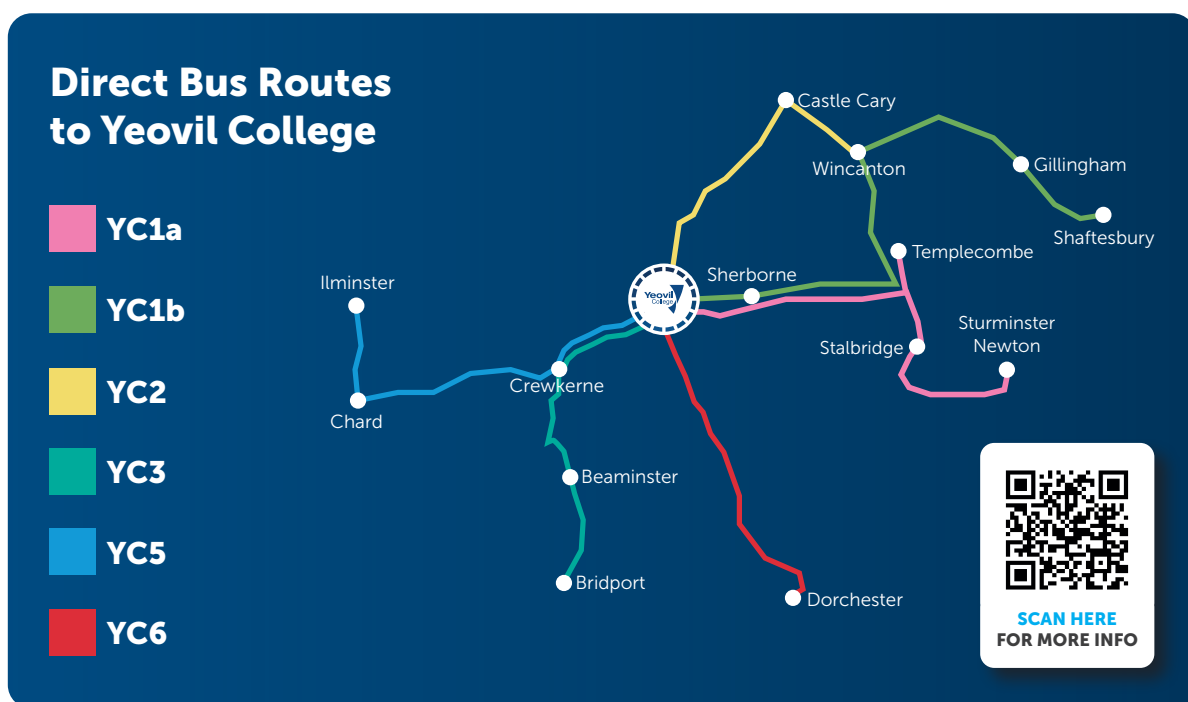
- The app is the quickest way to pay once you've completed the initial set up.
- If you are having problems logging in, ensure you are manually typing in your username and passwords and not copying and pasting them from an email.
- If you are still experiencing any difficulty, email our Finance team on: finance.admin@yeovil.ac.uk who will be able to help.



We have created a step by step video to support you in this process.
Please scan the QR code on this page to access the video.

DIRECT BUSES

Being located in the heart of South Somerset, Yeovil College is easily accessible through a variety of travel options. While students can choose to walk, cycle, drive (and park on campus), or use public transport, one of the most popular and beneficial choices is the Yeovil College Direct fleet of buses. Operated in partnership with South West Coaches, these exclusive services are designed specifically for our students, offering direct, reliable, and affordable travel to and from campus. This not only simplifies the journey but also helps reduce costs for students and their families. In addition to our direct buses, several public bus services also operate routes to the College, providing further flexibility for those commuting from surrounding areas.



YC1a

Pick-up/Drop-off points:
 Templecombe
 Stalbridge
 Sturminster Newton
 Bishops Caundle

YC1b

Pick-up/Drop-off points:
 Gillingham
 Shaftesbury
 Henstridge
 Milborne Port
 Sherborne

YC2

Pick-up/Drop-off points:
 Wincanton
 Ansford Churchfields
 Castle Cary
 Sparkford
 Queen Camel
 Marston Magna

YC5

Pick-up/Drop-off points:
 Ilminster
 Chard
 Crewkerne
 West Coker

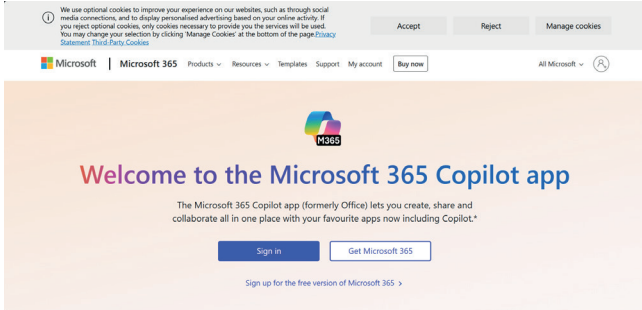
YC3

Pick-up/Drop-off points:
 Bridport
 Beaminster
 Broadwindsor
 Mosterton Village
 North Perrott

YC6

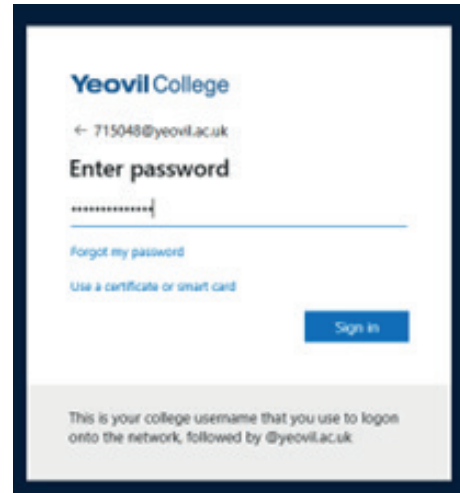
Pick-up/Drop-off points:
 Dorchester
 Charminster
 Charlton Down
 Minterne Magna
 Leigh

SETTING UP YOUR MICROSOFT 365 ACCOUNT



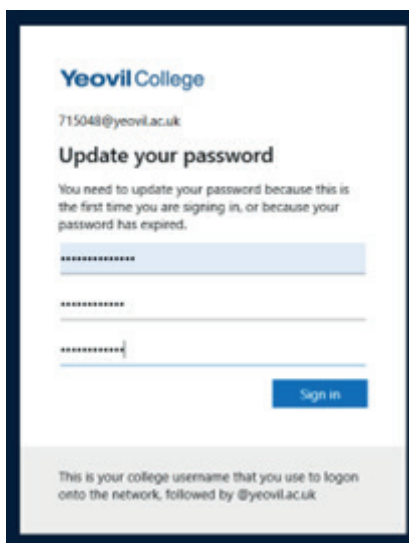
1

Go to www.office.com and click "Sign in".



2

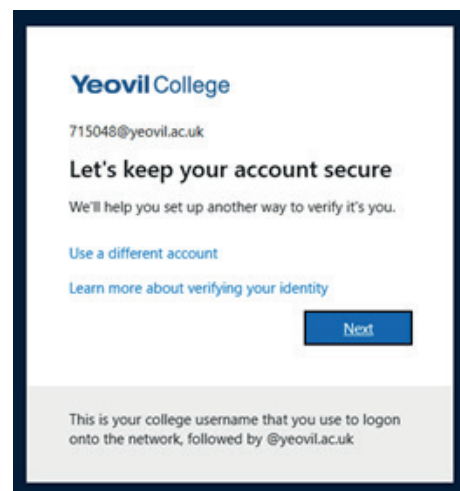
You can now log on using your student ID Number and password. This will be given to you in your enrolment email.



3

You will now be asked to update your password to one that is personal you. You will then use this throughout your time at Yeovil College. Your password must meet the following criteria:

- A minimum of 12 characters long
- Contain a least 1 uppercase and 1 lowercase letter and,
- Contain at least 1 special character (e.g. !, @ or #)
- The password can NOT contain your first name, surname or student ID

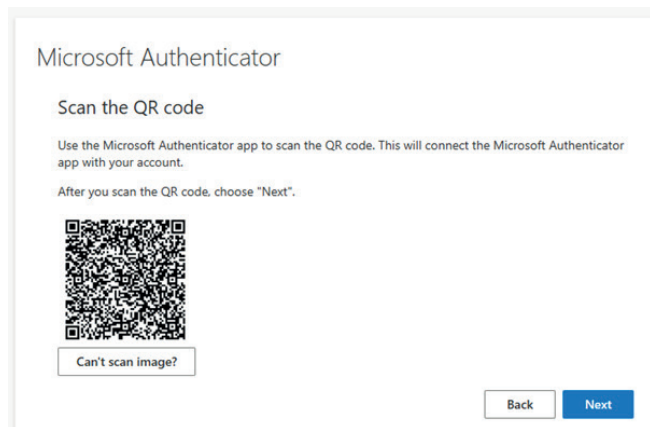


4

Once your new password has been accepted; you will need to set up the Microsoft Authenticator app on your phone. Follow the prompts and download the app from your app store.

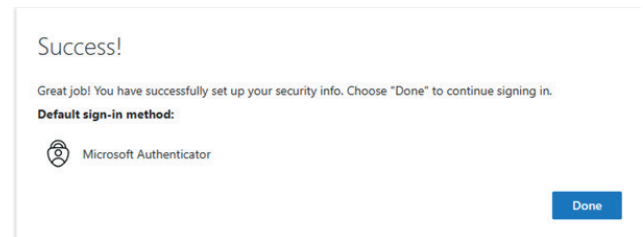
Once downloaded, open the app and press the "+" symbol in the top right, then "Work or School", then "Scan QR" code. Your mobile phone camera should now open.

SETTING UP YOUR MICROSOFT 365 ACCOUNT



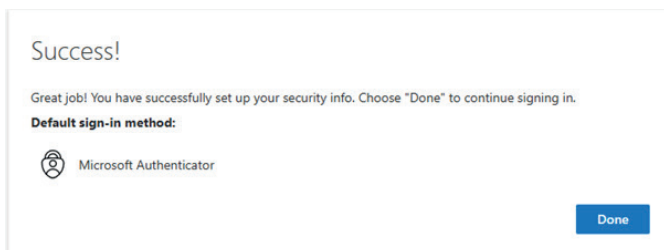
5

Go to www.office.com and click "Sign in".



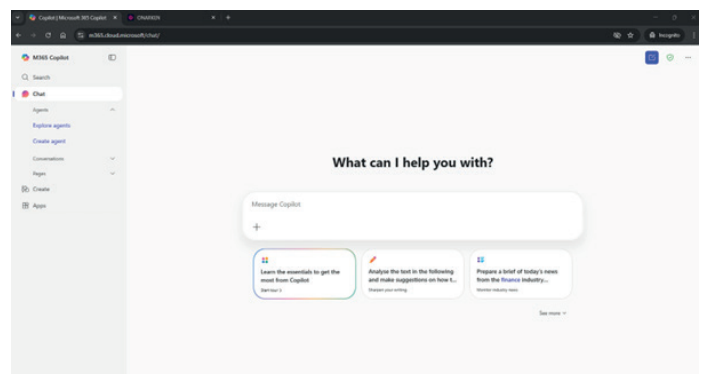
6

Step 6: You can now log on using your student ID number and password. This will be given to you in your enrolment email.



7

Step 7: Now keep pressing "Next" until you see the following screen, you have now successfully linked your authenticator app to your Yeovil College account.



8

Step 8: Once logged in you will be presented with the Microsoft 365 Copilot homepage.

FINANCIAL SUPPORT

Yeovil College offers a variety of financial support and funding options to assist students during their studies. By alleviating financial concerns, students are empowered to perform at their best.

FREE STUDY

If you are under 19 years old and studying at Yeovil College, your study programme is free, and other than resource fees, and costs directly linked to the study programme, there is no cost to learning.

16-19 BURSARY FUND

Yeovil College provides funds to assist students facing financial challenges and to support the general costs of studying, such as books, travel, equipment, and technology. Our bursary allocation is limited and distributed on a first-come, first-served basis. Therefore, if the total family income is less than £40,000 per annum, it is important to apply for a bursary as soon as the application process opens. As a guide, we can confirm that learners are entitled to apply for bursary as follows:

- Bursary learners 100% funded: household income below £30,000.
- Bursary learners 50% funded: household income £30,001 - £40,000.

Please ensure that you reach out about bursary funding as soon as possible.

ADULT ADVANCED LEARNER LOAN

If a student is aged 19 or above, has been a UK resident for three years prior to the start of the course, and are interested in studying a level 3 qualification or higher, they may be eligible for help with course fees through an Advanced Learner Loan. The application process is straightforward and does not consider household income, nor does it require a credit check. Repayment of the loan begins only when your income is over £524 a week, £2,274 a month or £27,295 a year. If your income falls below these thresholds, repayments will stop and only re-start when your income is over these thresholds.

ADULT ADVANCED LEARNER LOAN BURSARY FUND

The Advanced Learner Loan Bursary Fund supports students with an approved Advanced Learner Loan in place to cover course fees and a household income of 40,000. It can be used for childcare, travel costs, additional learning support, and hardship.

RESOURCE FEE

An additional fee applies to most full-time programmes, charged at different rates depending on the requirements of your study programme. This fee covers the cost of practicing safely and professionally within the curriculum area. Payment is due upon enrolment and will be discussed during New Students' Day and the enrolment period. Bursary support can be used to cover resource fee payments.

FREE SCHOOL MEALS

All students aged 16-18 whose families are on low incomes or specific benefits are entitled to free school meals. This means that for every day a student is timetabled, they will receive a £4.00 entitlement to spend on a meal via our cashless system.

WHAT HAPPENS NEXT?

GCSE RESULTS DAY

This is what you've been working towards. It's time to open that envelope and discover what your next steps are. Please don't worry if the results are different to what you were expecting – you are not alone. There are plenty of people in place to support you both in your school and here at Yeovil College.

ENROLMENT

This stage will be different depending on whether you've enrolled at New Students' Day or whether you need to make a change to your course based on grades or you have had a change of heart.

If you have already enrolled and have the grades you were expecting, you will be contacted by the Yeovil College iZone team via telephone to confirm your results. If you want or need to make a change to your application, there are several dates where you can visit an enrolment drop-in session. Once you have enrolled, whether this is at our New Students' Day or one of our drop-in enrolment sessions, you will be able to view your timetable through your Yeovil College account.

INTRODUCTION DAY

This is your first official day at Yeovil College. During this day, you will receive your student ID and lanyard, sign your final paperwork, check your timetable, and better understand the expectations we have for our students. This is a hugely important and mandatory day, as it gives us all a day to prepare for the official start of term.

FIRST DAY OF LEARNING

This is the first day you start your learning at Yeovil College, and this will vary depending on your timetable. On this day, all learners are expected to turn up ready to learn and this includes bringing the right equipment and resources that you need to study with.

BRING YOUR OWN DEVICE

Yeovil College is a 'Bring Your Own Device' (BYOD) institution, meaning students are expected to bring an internet-enabled device for both onsite and offsite learning, enabling collaborative learning. Whilst we don't recommend specific devices, we are a Windows-based college using Microsoft products. Students can install Office 365 for free on up to five personal devices. If a student forgets their device, a limited number of laptops are available for occasional use on campus. Students eligible for bursaries or free school meals may be loaned a laptop for the duration of their course.



Did you know that Yeovil College also has a University Centre right here in the heart of Yeovil?

Get ready to experience

At Yeovil College University Centre, we are proud to deliver a range of practical and academic qualifications here in the heart of Yeovil, designed to support your next career steps. Our University Centre provides a genuine alternative to traditional universities, allowing you to pursue higher-level and professional qualifications in a personalised setting. Our qualifications are crafted with input from local employers and industry needs and are flexibly delivered to accommodate the busy lives of real people.

We offer a range of qualifications from Higher National Certificates (HNCs) at Level 4 to full Bachelor's Degrees at Level 6, with options to study full-time or part-time, enabling you to balance your studies with other commitments.

Why choose to study with us?

- **High-Quality Education:** Our dedicated University Centre is committed to delivering an exceptional higher education experience.
- **Prestigious Partnerships:** We collaborate with renowned UK universities and educational partners, including the University of Gloucestershire, The Open University, City & Guilds, Pearson, AAT and CMI.
- **Expert Instruction:** Our qualifications are taught by industry experts who benefit from a regular and diverse continued professional development programme.

- **Convenient Location:** Located in Yeovil, in the heart of South Somerset, there's no need to travel far and wide to study at a higher level.
- **Practical Focus:** Our qualifications are designed to be practical and vocationally focused.
- **Flexible Learning:** We offer a flexible learning experience, allowing you to 'step on and off' as your life and commitments change.
- **Access to Higher Education:** We provide Access to Higher Education qualifications for those who are not yet ready for university-level study.
- **Work Placement Opportunities:** We offer exciting work placement opportunities to help our students develop and progress.





YC 'BIG BUILD' PROJECT

Prepare to witness Innovation in Action

"In a landmark and historic move for further education in Somerset and North and West Dorset, Yeovil College proudly announced the launch of its brand-new campus transformation. The state-of-the-art facilities promised to offer unparalleled educational experiences to students across the region with advanced facilities, dynamic learning environments, and a commitment to excellence."

VISIT US

Yeovil College, Mudford Road,
Yeovil, Somerset, BA21 4DR

CONNECT



GET IN TOUCH



Call

01935 423921



Contact

iZone@yeovil.ac.uk



Click

www.yeovil.ac.uk