



EXTRAORDINARY **SKILLS**

FOUNDATION LEARNING PROSPECTUS



WELCOME

Our purpose is to create life-changing opportunities by shaping an exciting future with the best education and collaborations. We will help you reach your personal goals, whether that is to become more independent, gain employment or to continue with your further education study.

We are truly committed to widening participation and supporting learners with a wide range of learning difficulties and disabilities and we have high aspirations for all students within the department.

On a course within the Foundation Learning curriculum, you will have access to all of the Yeovil College services, these include careers, work experience and enrichment programmes, with the addition of specialist one-to-one, intervention sessions, support, occupational therapists and speech and language therapy, where identified as a need. These are all set within a dedicated area of the college, to ensure a feeling of safety and familiarisation with their immediate environment.

“Our focus in the Foundation Learning Department is to help our learners develop a range of important skills – social, academic and vocational in a safe, supportive and nurturing environment.”

Our teachers are our true strength; they are our superpower. Not only are they experienced professionals, but they genuinely care deeply about their students. Courses are taught by well qualified and experienced lectures who are dedicated to ensuring student success through effective curriculum delivery and high-quality pastoral support.

We work together as one close unit, with parents/guardians, our teaching team, Yeovil College business support professionals, our SENDCo and external industry professionals, working as a team to create the best solutions for and with the student. We are one YC team, all working towards the best individualised plan for the student.



“What I love about Yeovil College is that the staff are so positive and happy, they have supported me fantastically. I enjoyed coming to college and seeing my friends. I would recommend Yeovil College to anyone - it is an outstanding college!**”**

Ellise Hayward

Former Health & Social Care student, former Internal Progression to Support Internship, previously of Preston School.



WHY CHOOSE US?

Our People

Exceptional, highly-trained staff work closely with employers, local authorities, Discovery and other relevant professionals to triage the correct ongoing support for the student. Students have a dedicated team of people to support them, whilst in the college environment.

Extraordinary Focus

Small class-size, high ratios and spacious environments mean our students get focused support and attention.

Careers Support & Work Experience

We have regular opportunities in place for our Foundation Learning students to meet our careers teams and work with the team as a small group and on a one-to-one basis. We work with businesses from across the region and our students have the opportunity to access relevant work experience and placement opportunities, where appropriate, with former students accessing apprenticeships or direct employment.

Ongoing Communication

We stay in regular contact with our parents, guardians and other professionals through our students' time in college, and often long beyond their college years. We regularly communicate through parents' evenings, parent forums and communication logs.

Strong Partnerships

We work closely with local community and business partners, including Discovery, Somerset Education Business Partnership and Imagin, together with many local employers, including Yeovil District Hospital, Leonardo Helicopters and Thales.

Learning Environments

We have a dedicated set of learning environments, which can be flexed and evolved depending upon the nature of the tasks and activities involved, including sensory spaces, social spaces, training kitchens, a working apartment and relaxation areas.

Next-Steps & Progression

We have high expectations for all students within our Foundation Learning department, and we support them to be the best they can possibly be, no matter what the end goal is. We encourage taster session, careers support, voluntary work and bespoke work placements.

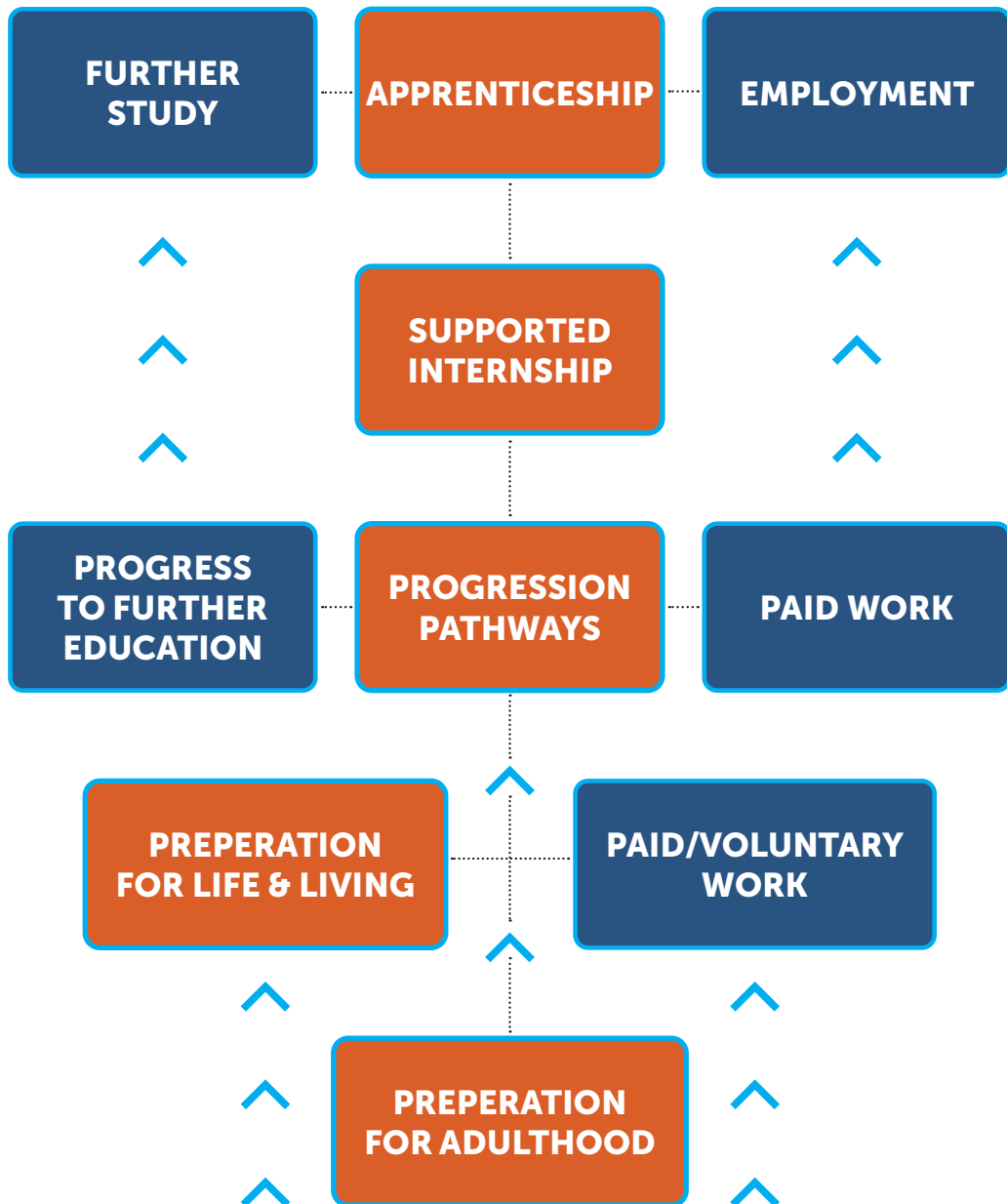
Students are taught by a highly-qualified, creative and innovative team who will guide and encourage you to achieve your full potential.





PROGRESSION & NEXT STEPS

Every student receives regular careers support and guidance, enabling them to make positive career decisions, in a supported and tailored way. Students are supported and developed to progress through to their end goal.





FURTHER

COLLEGE STUDY

Many of our Foundation Learning students' progress to a number of further education subjects, including:

Automotive Engineering:

If cars are your passion, then take your foot off the brake because a career within Automotive Engineering is within easy reach at Yeovil College.

Business:

Learn about all aspects of the world of business from finance, marketing, quality and human resources through to leadership, management and enterprise, gaining many transferable skills, behaviours and knowledge.

Construction:

Yeovil College offers hands-on training that will equip you to build a great career in one of the many building trades whilst developing strong employability skills for the future.

Creative Industries:

We combine strong practical education with excellence in academic teaching to encourage reflective, critical artists, designers and media specialists.

Hair & Beauty:

Hair, Beauty Therapy and Media Makeup provides learners with many exciting opportunities to working in a salon or luxury spa. Students will train in our own professional salon that is open to the public, gaining excellent customer service and communication skills.

Health & Social Care and Early Years Education:

Health, Social Care and Education is an incredibly important industry within our county, and this is one of the most exciting times in our history to consider studying Health, Social Care and Education at Yeovil College.

Hospitality & Catering:

The Hospitality and Catering industry is a great place to work. It is people-focused, fast-paced and creative, whether you are creating a meal, a drink, or importantly, a memorable experience.



Supported Internship Shining Stars Award Winner 2023, formerly of Fairmead School.

SAM BUCKINGHAM

Since winning Shining Stars, Sam has secured a full-time role with the Foundation Learning team at Yeovil College as a Learning Support Practitioner, where he is now supporting learners across the department. He understands first-hand what it is like to be a student within the department and provides an additional perspective to our teaching and support.



FACILITIES &

SPECIALIST SERVICES

Foundation Learning is a fantastic and supportive starting point for those who need it, and you can feel confident that as a team, we will work hard, treating you as an individual and in a bespoke way, to ensure that you fulfil the best outcome for you. We believe that our learners can achieve anything with the right support, environment, enrichment and time.

Tutorials

Tutorials are used as an opportunity to review our students' progress. This is where we will provide appropriate support, set next-step targets, keep you on track and ensure you achieve the very best outcome for yourself. You will also learn about how to keep yourself and others safe, which includes Prevent training, safeguarding and information to support the best outcomes.

Facilities & Your Space

Your study spaces vary according to the tasks and activities involved, for example we offer a working kitchen, an apartment area, sensory areas, large social and teaching spaces and flexible spaces for group work. Students are encouraged to explore the whole campus, however our 'bridge block' is a dedicated space for Foundation Learning students to relax, learn and work.

Feedback

Feedback is an essential tool used to support our students and we prioritise feedback at the end of every unit, as a minimum. A variety of learning strategies are used to deliver lessons, which helps us to achieve the maximum, positive learning experience for all students.

Enrichment

We offer a huge range of extra-curricular enrichment to our Foundation Learning students, to help and support our core curriculum. Our students will have the opportunity to continue working towards independence, whilst developing skills social skills, self-esteem, self-confidence and self-resilience, all whilst having fun.

EHCP Reviews

We will arrange formal annual reviews with tutors, carers and professionals that are involved in all aspects of the student's life.

Therapies

We work closely with professionals to meet the needs of the learners with therapy provision identified via an EHCP, to integrate support into our curriculum e.g. Speech and Language Therapy..

Careers

Every student within our Foundation Learning curriculum will undertake several group and individual meetings with our careers team. They become regular and familiar faces within Foundation Learning.





TRANSITION TO COLLEGE

Moving to College:

We work with all incoming students and school partners to plan a smooth transition to college, this involves several visits to college over a sustained period of time to help the young person feel comfortable and confident with their environment, including visits to the Foundation Learning base rooms, curriculum exploration, opportunities to meet the team, library tours and visits to our canteens and cafe areas. We also visit the young person's school to share information, engage with the class and work with them in their safe environment.

Buddy System:

We also operate a 'buddy' system for all new students. This enables future students to connect with current students and form a friendship and bond with people who have been in the exact same position, with all the same questions, worries and perhaps confidence issues. Buddys tend to be Yeovil College students from the same school as the young person allowing immediate recognition and commonality.

Virtual Tours:

We have provided a full virtual tour of Yeovil College to further embed comfort and understanding of our college. Explore rooms, environments and classroom layouts, plus engage in video content, taught lessons and presentations.

Early Integration:

We thoroughly believe in transition and preparation for next steps, which results in early transition planning and visits, such as visits to Hazelhurst Community Farm, leading to better and more supported outcomes for our learners, which offers a day service for people with learning disabilities, autism and PMLD. Some of our students will be accessing Hazelhurst when they finish Yeovil College, and these visits are the start of the transition work for these students.



Students who are ready for their next career steps will be encouraged to attend taster sessions in college vocational areas throughout the year.



COLLEGE LIFE

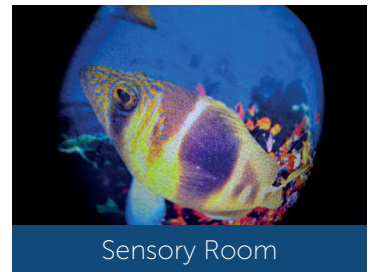
All Foundation Learning students will be able to access all Yeovil College general facilities, however they also have their own safe space, which is bespoke to them.



Food Court



DaVinci Restaurant



Sensory Room



Flexible Learning Environments



Break-out Areas



Classrooms



Computer Suites



Learning Resource Centre



Outdoor Space

Our facilities are bespoke to our students, however students are also encouraged to utilise the full campus and get fully involved in campus life, remembering that there is a safe space which is forever their own.



Big Beach Clean 2023

Our Preparation for Adulthood students and staff took part in the 2023 Big Beach Clean at Weymouth Beach. The aim of this event is part of the national project of helping the environment by preventing litter entering our waterways and seas across the UK.



OUR STUDY PROGRAMMES

Pathway 1

Preparation for
Adulthood

Bespoke delivery based
on learner need, Maths,
English and Digital
Skills, RARPA, optional
qualification.

To live as
independently
in supported
environments,
adult services and
community provision.

Pathway 2

Preparation for
Life and Living

Bespoke delivery based
on learner need, Maths,
English and Digital
Skills, RARPA, optional
qualifications at Entry
Level 1, 2 & 3.

Progress to Progression
Pathway, cross college
delivery, Supported
Internship.

Pathway 3

Progression
Pathway

Two pathways available:
Sector pathways and
Personal Development.
Promotes access to
vocational areas and
work experience.

Progress to supported
employment, cross
college programmes
at Level 1 Supported
Internship, aid
employment.

Pathway 4

Supported
Internship

An employability
pathway which places
work experience
at the heart of the
programme.

Paid employment
supported employment
or voluntary work.



PREPARATION FOR ADULthood

A programme to enable you to live independently in supported environments within adult services and community provision

Programme Introduction:

This programme will support all aspects of your needs including health, care, therapeutic interventions, medications, and educational development. We create supportive and stretching learning environments in which learners are encouraged to take ownership of their learning and develop their confidence and independence so they can make progress towards their EHCP outcomes.

What I'll Learn:

Working towards a range of experiential activities applicable to the learner's needs:

- Functional skills- English, Maths, Money
- Digital skills
- Social and Communication skills
- Life skills
- Independence skills
- A variety of leisure and vocational subjects
- Optional Entry 1 qualification.

My Progress & Achievement:

- Some learners may undertake a formal qualification at Entry level.
- Most learners will have a programme based on their own individual starting points and needs which is tracked and monitored in a variety of ways including individual targets that are negotiated and set with learners, carers, and therapists.
- We also use our baseline system to record distance travelled for our students in accordance with the Preparing for Adulthood Framework.

My Progression:

- Up to a two-year programme depending on your personal development and needs.
- Some learners progress to other courses.
- Most learners successfully progress on to positive adult services and community provision.



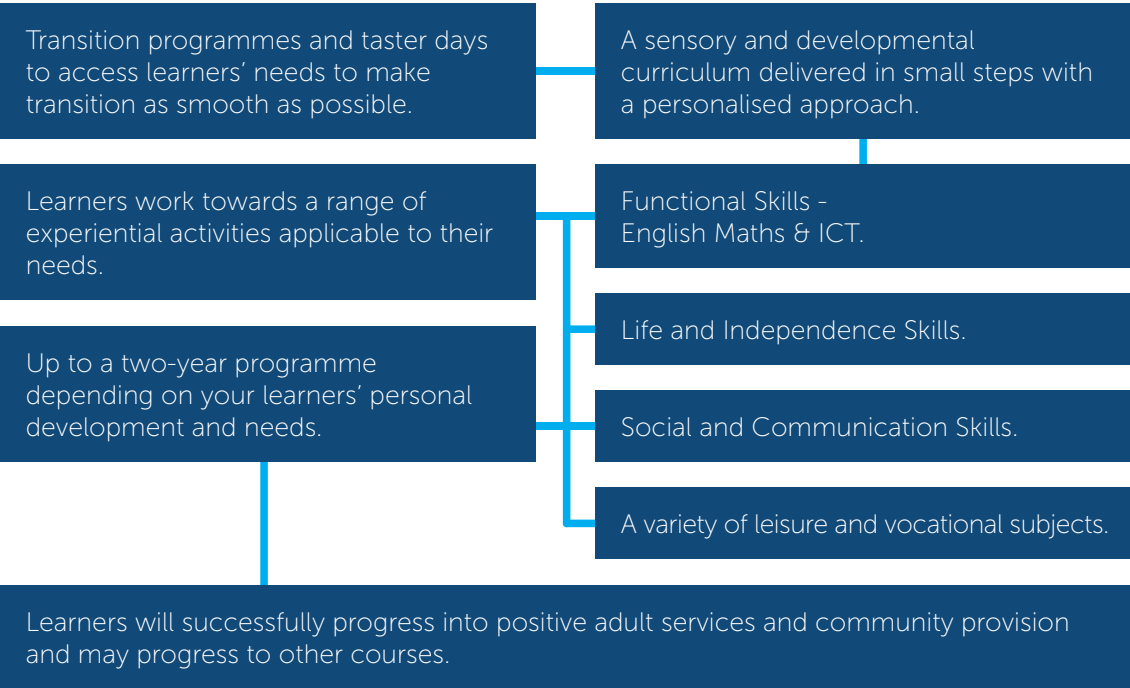
My Transition to College:

We would like to get to know you as soon as possible. We run transition programmes and taster days to assess your needs but also make transition as smooth as possible. Suitability for the programme will be assessed by the college SEN team and via local-authority consultation process.

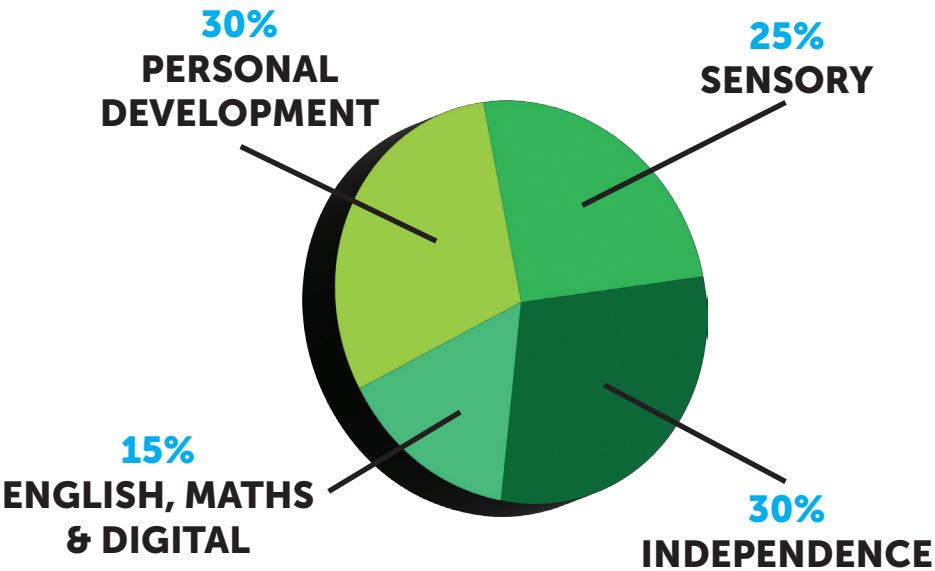
Find Out More & Apply

Scan the QR to go directly to our website or contact iZone at 01935 423921 or iZone@yeovil.ac.uk

Some learners may undertake a formal qualification at Entry Level. Most learners will have a programme based on their own individual starting points and needs which is tracked and monitored in a variety of ways.



BREAKDOWN OF TIME SPENT IN COLLEGE





PREPARATION

FOR LIFE & LIVING

This programme provides for the needs of individuals between the age range 16-24, with severe to moderate learning difficulties who want to continue to build on essential skills for living, employment and community.

Programme Introduction:

The programme provides for the needs of individuals between the age range 16-24, with severe to moderate learning difficulties who want to continue to build on essential skills for living, employment and community.

What I'll Learn:

- Working towards a range of activities applicable to your needs
- Improving independence
- Building confidence to live successfully and safely in the community
- Developing employability, communication and social skills through a range of interactive subjects
- Supporting learners to achieve a range of practical and functional skills
- Exposure to internal and where appropriate external work-related activities.

My Progress & Achievement:

- Learners may undertake formal qualification at Entry Level 1, 2 or 3
- Most learners will have a programme based on their own individual starting points and needs which is tracked and monitored in a variety of ways including Recognising and Recording Progress and Achievement (RARPA) and using our baseline assessments to record the distance travelled.
- Individual targets are negotiated and set with learners, carers, and tutors. There are different options in this programme, which will ensure it is tailored to your EHCP outcomes, aspirations, and support needs.
- You will also practice applying your skills in external work placements or internal learning companies where you will build your CV and employability skills.



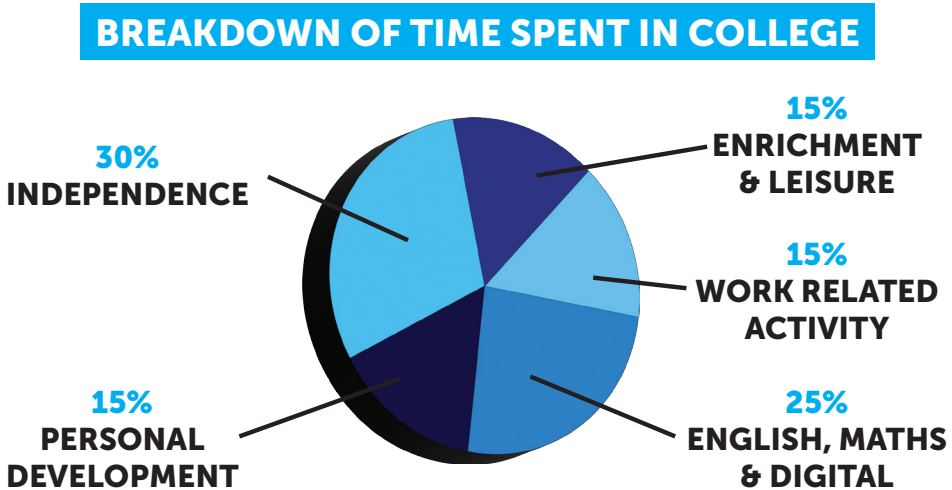
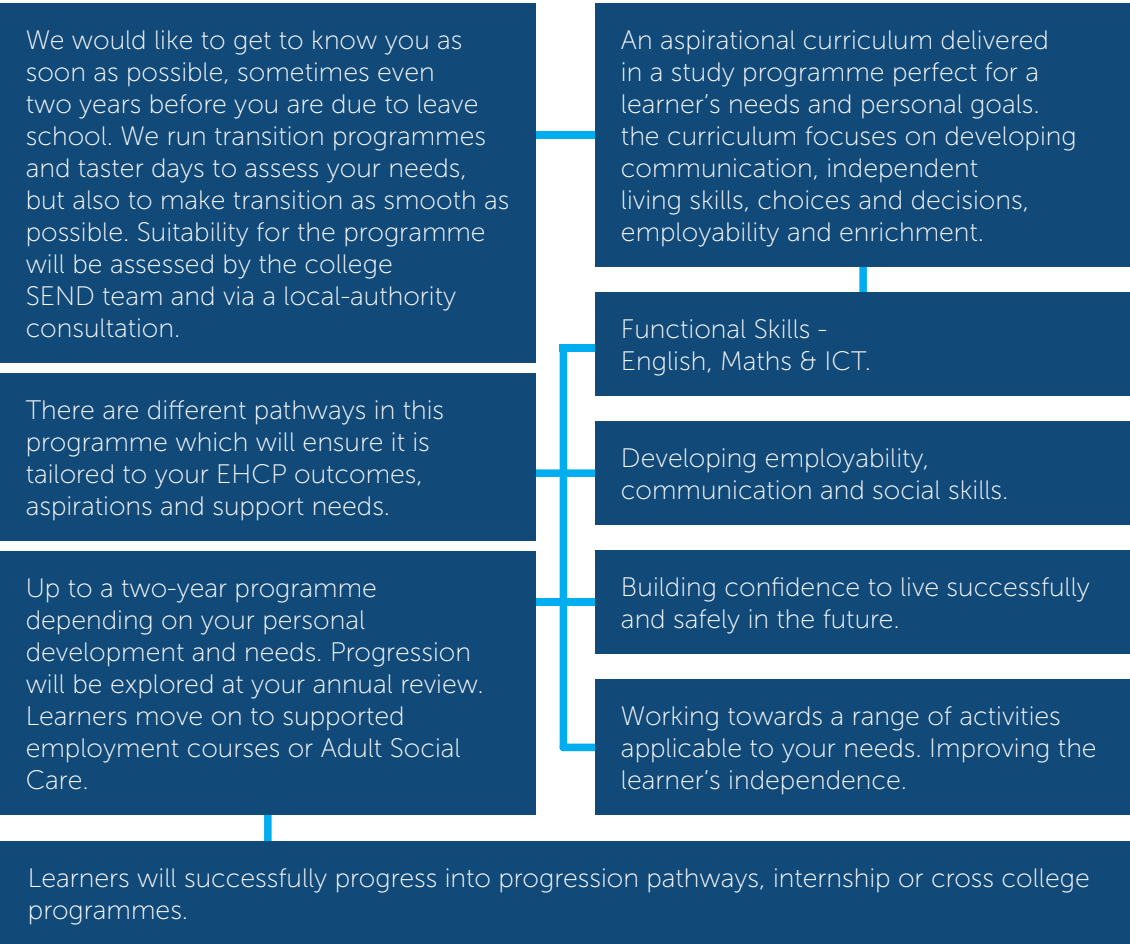
My Progression:

- Up to a two-year programme leading to the achievement of an Entry Level qualification.
- There are opportunities on this pathway to progress in year to the Progression Pathway, Internship, Cross College programmes or into supported employment courses or Adult Social Care Provision.

Find Out More & Apply

Scan the QR to go directly to our website or contact iZone at 01935 423921 or iZone@yeovil.ac.uk

Some learners may undertake a formal qualification at Entry Level 1, 2 or 3. Most learners will have a programme based on their own individual starting points and needs which is tracked and monitored in a variety of ways including Recognising and Recording Progress.





PROGRESSION PATHWAYS

PERSONAL DEVELOPMENT

This programme serves as a steppingstone for you to progress on to further studies and experience the world of work in a supported way.

Programme Introduction:

This programme will help you build confidence and further develop and build your social communication skills by providing opportunities for you to experience vocational and work experience opportunities in a supported environment.

What I'll Learn:

- Working towards a range of activities applicable to your needs
- Building confidence, self-esteem and independence
- Developing employability, communication and social skills
- Supporting learners to achieve the next level of Functional skills or GCSE grades
- Introduction to a range of vocational subjects such as Sport, Catering, Creative Studies, Automotive Engineering and Health and Social Care
- Exposure to internal and where appropriate external work-related activities.

My Progress & Achievement:

- You will learn in small groups in a range of academic, wellness and vocational subjects.
- You will make the most of specialist, practical workshop spaces as well as small group English and Maths classes. You will also be developing your attributes from individual starting points, which are tracked and monitored in a variety of ways including Recognising and Recording Progress (RARPA). Individual targets are negotiated and set with you, and your tutors.

My Progression:

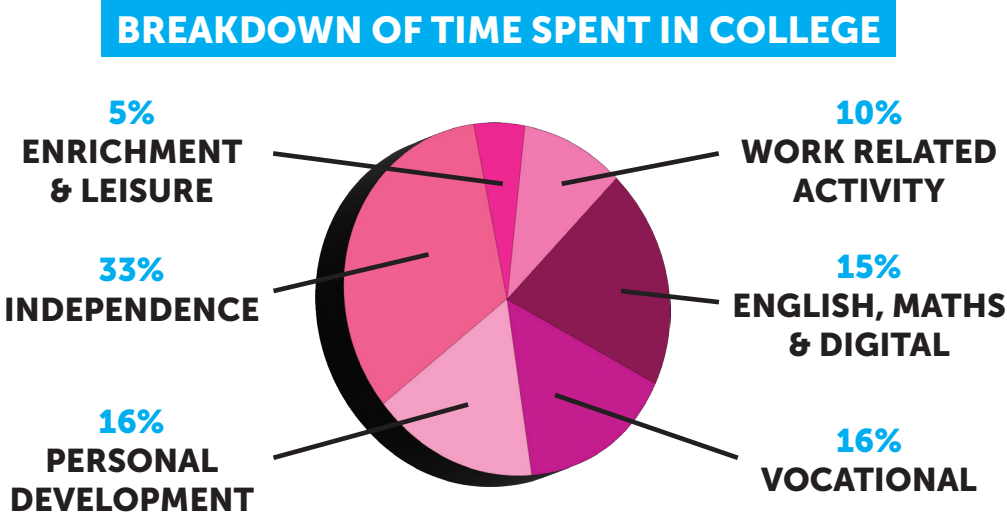
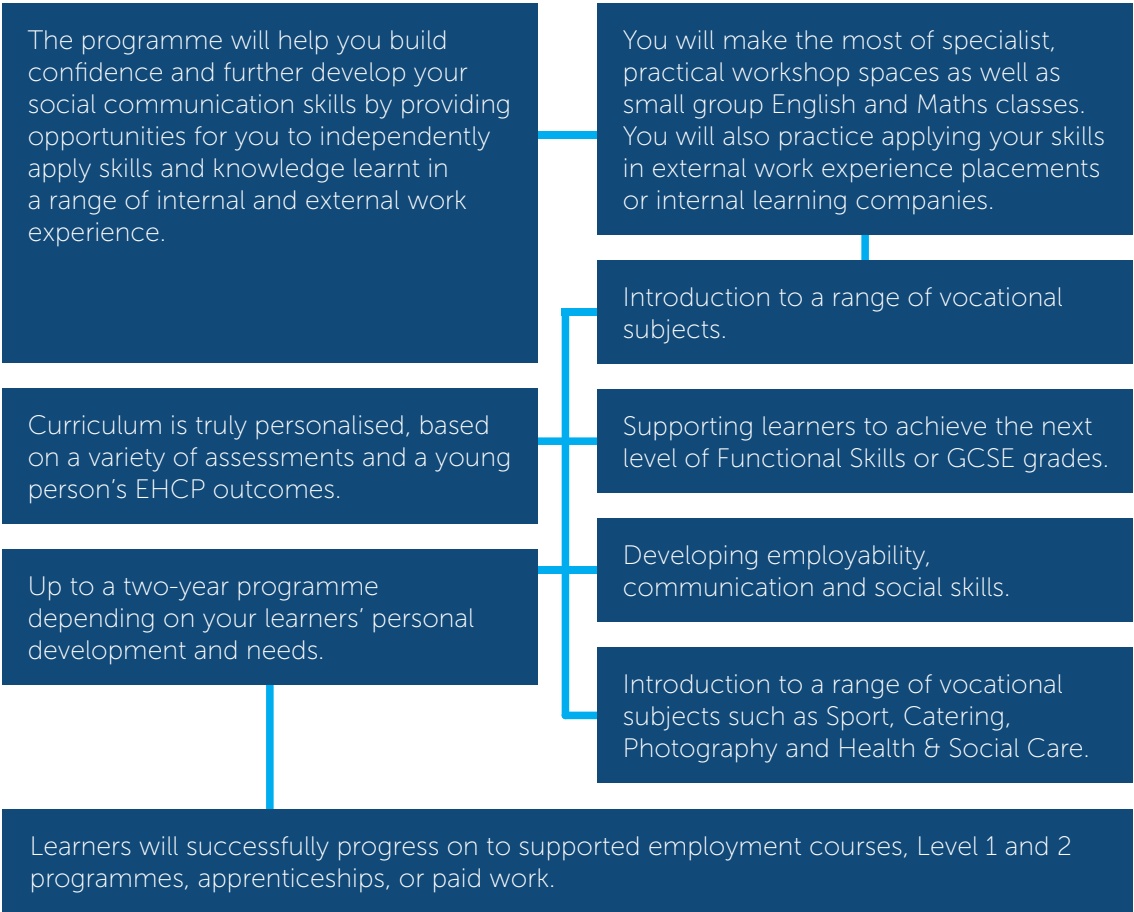
- Up to a one-year programme leading to the achievement of an Entry Level 3 qualification.
- Progression will be explored regularly. You will move on to a Level 1 qualification in college, supported employment, apprenticeships, or an internship.



Find Out More & Apply

Scan the QR to go directly to our website or contact iZone at 01935 423921 or iZone@yeovil.ac.uk

You will work towards an Entry or Level 1 qualification. You will also be developing your attributes from individual starting points. Individual targets are negotiated and set with learners, carers and support workers.





PROGRESSION PATHWAYS

SECTOR PATHWAYS

The programme serves as a stepping stone for you to progress on to further studies and prepare you for the world of work.

Programme Introduction:

The programme will help you build confidence and further develop your social communication skills by providing opportunities for you to independently apply vocational skills and knowledge learnt in college vocational environments.

What I'll Learn:

- Building confidence, self-esteem and independence
- Developing employability, communication and social skills
- Supporting learners to achieve the next levels of Functional Skills or GCSE grades
- Introduction to a vocational subject such as Sport, Catering, Automotive Engineering and Health and Social Care.
- Exposure to internal and where appropriate external work-related activities.

My Progress & Achievement:

- You will build on your vocational skills within the classroom and workshop environments at College.
- You will also be developing your attributes from individual starting points, which are tracked and monitored in a variety of ways.
- Individual targets are negotiated and set with you, and your tutors.

My Progression:

- Up to a one-year programme leading to the achievement of an Entry 3 qualification in a vocational specialism.
- Progression will be explored regularly. You will move on to a Level 1 qualification in College, supported employment, an internship or an apprenticeship.

You will work towards an Entry or Level 1 qualification. You will also be developing your attributes from individual starting points. Individual targets are negotiated and set with learners, carers and support workers.

The programme will help you build confidence and further develop your social communication skills by providing opportunities for you to independently develop vocational skills and knowledge learnt in a range of specialist subject areas.

You will learn in a range of vocational subjects. You will make the most of specialist, practical workshop spaces as well as small group English and Maths classes.

Learners work towards a range of experiential activities applicable to their needs.

Building confidence, self esteem and independence.

Functional Skills - English, Maths & ICT.

Up to a one-year programme depending on your personal development and needs.

Developing employability, communication and social skills.

Introduction to a range of vocational subjects such as Sport, Catering, Automotive and Care.

Learners will successfully progress into supported employment, paid employment, cross college vocational courses or supported internship.





SUPPORTED INTERNSHIPS

Supported Internships are year-long opportunities with rotations in one or several employers that aim to move you in to paid work.

Programme Introduction:

This programme will provide you with the essential employability skills and experience by getting hands-on with an employer. You'll be given the skills required to be successful in the job application process and build on your self-management and independence skills - 70% of your time will be in the workplace with the remainder in a classroom.

What I'll Learn:

- Working towards a range of experiential activities applicable to the learner's needs
- Job application skills and etiquette
- Travel training to work
- Building a CV
- Communication and independence
- Industry relevant knowledge and skills
- Health & Wellness
- Financial Literacy.

My Progress & Achievement:

- You will build on your employability skills both at work and within the classroom.
- You will also be developing your attributes from individual starting points, which are tracked and monitored in a variety of ways including Recognising Progress (RARPA).
- Individual targets are negotiated and set with you, employers and intervention support staff where appropriate.

My Progression:

- Up to a one-year programme depending on your personal development and needs.
- To gain valuable skills, build confidence, and transition to meaningful employment.

Employer Links:

- Yeovil District Hospital
- Leonardo - Aerospace, Defence and Security sector.



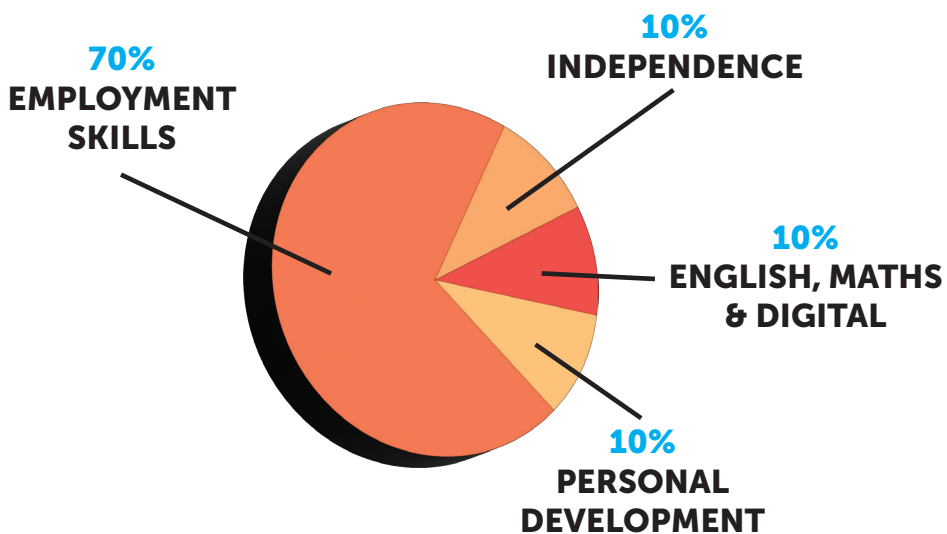
Find Out More & Apply

Scan the QR to go directly to our website or contact iZone at 01935 423921 or iZone@yeovil.ac.uk

You will be visited in your workplace on a regular basis by staff to offer you support, job coaching or help resolving any issues that you might have. This programme is suitable for you if you want to work and have an EHCP.



BREAKDOWN OF TIME SPENT IN COLLEGE





CAREER SKILLS & PROGRESSION

Our Foundation students receive regular and supported careers, information, advice and guidance, where together they will explore opportunities available to them to support their future educational or work journey.

We deliver careers education, advice and guidance in a way that takes account of our students' needs and does not discriminate in any way. Under the SEND Code of Practice, we make all reasonable adjustments in advance of careers consultations, and in an anticipatory way, so not to prevent or disadvantage careers sessions in any way. We aim to provide careers education and guidance for young people with SEND in the same way as other young people. We will enable our students to make sense of the situation and understand their options to support transition to the next stage of their education and work journey.

We will regularly adjust careers conversation settings, language and our approach. We may adopt a series of shorter careers sessions, rather than one longer conversation, engage visual aids, allow for processing time, produce mind maps and encourage movement or session breaks. We are confident that through our strong methodology and ability to flex as required, all young people will experience a positive careers education.

Match Your Skills

Visit our Match Your Skills section on the website to discover which career suits you the most. You will also understand what your annual salary could be, what you will do within that job role, which skills and knowledge are required to be successful and what progression opportunities could be available to you. Visit your preferred course on our website to understand real-time information about your career choice, including current job vacancies and by how far the sector is set to grow.



You can also take our profile quiz to help you understand which career best suits your strengths, character and aspirations and strengths. Visit **Match Your Skills** at www.yeovil.ac.uk/study-with-us/match-your-skills/ or scan the QR code.

Ben is a former Supported Internship student from Yeovil College, who has continued to impress us throughout his Yeovil College journey. Ben achieved his Supported Internship and achieved the highest recognition afforded to anyone at the college – a Yeovil College Shining Star.

We are delighted to report that Ben is now working full-time in quality control in a food manufacturing company. He has completed and passed his apprenticeship and, most recently, his Level 3 Food Safety. None of this would have been possible without the skills and confidence gained at college.



CAREERS, SKILLS & PROGRESSION PLAN

PATHWAYS TO SUSTAINED EMPLOYMENT FOR FOUNDATION LEARNING STUDENTS

Course name	Enrichment and Activities to support progression	Options for progression Route 1	Enrichment and Activities to support progression	or Options for progression Route 2	Enrichment and Activities to support progression	or Options for progression Route 3	Enrichment and Activities to support progression	or Progression Route 4
Preparation for Adulthood (up to 2 years)	<ul style="list-style-type: none"> • Guest speakers • Communication • Community links • Understanding support available 	Preparation for Life and Living	<ul style="list-style-type: none"> • Project Choice virtual work experience • Guest speakers • Careers sessions • Career fairs 		Bespoke CEIAG intervention depending on the learner's individual ability and need.			
Preparation for Life and Living	<ul style="list-style-type: none"> • Project Choice virtual work experience • Guest speakers • Careers sessions • Career fairs 	Preparation for Life and Living Year 2 (If not ready to progress)	<ul style="list-style-type: none"> • Guest speakers • Careers 1-1 • Work experience • Career fairs 	Progression Pathways (Sector Pathways)				
Progression Pathways (Sector Pathways or Personal Development)	<ul style="list-style-type: none"> • Guest speakers • Project Choice virtual work experience • Work experience • Career and employability sessions 		<ul style="list-style-type: none"> • Guest speakers • Work experience • Careers and employability sessions 	Supported Internship				
Supported Internship	<ul style="list-style-type: none"> • Discovery employability support • Career guidance support when needed 	Apprenticeship or Supported Apprenticeship	<ul style="list-style-type: none"> • Access to CEIAG for YC Apprentices and access to all support services 					
						Supported Internship Level 1 or 2 course	<ul style="list-style-type: none"> • Discovery employability support • Career guidance support when needed • Careers and employability sessions • Work Experience • Careers 1-1 • Grofar • Springpod 	Sustained Employment
								Sustained Employment



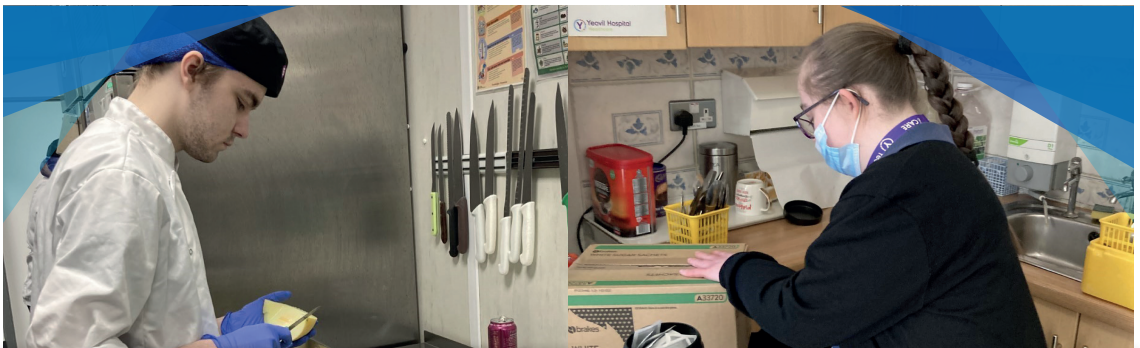
WORK

EXPERIENCE

Work experience is built into many of our Foundation Learning programmes, and learners will be supported to find voluntary or paid employment, depending upon their level. Students on our Supported Internship programmes, for example, may progress to a 20 hour per week work experience placement. However, work experience is not for everyone, and we work hard to offer individualised solutions for all students. Work experience and supported internships are delivered at Yeovil College, Yeovil District Hospital, Leonardo Helicopters UK, local employers, community organisations and within the wider community.

Foundation Learning students spend a large proportion of their time, around 200 hours, working with business managers from across Yeovil College, some even have industry places within the college, which often progress to Supported Internships. Students regularly work on projects such as delivering post, supporting marketing activities and selling and enterprise. Foundation Learning students are present right across the college in a supportive and helpful capacity and have become a true business asset and support to all at Yeovil College.

At Yeovil College, we have set up an innovative scheme, which allows our learners to undertake real work and job description within the safety and support mechanism of the Yeovil College network. This has proved brilliant for learners in developing their skills, building confidence and independence, preparation for external employment and for community integration. Seven learning companies have already been created - Post room/Reception, Ground Maintenance, LRC/Reprographics, Food Court, Careers Administration, Administration and Hair & Beauty Assistant, with more to come.



We are extremely fortunate to work with Yeovil District Hospital, who provide Supported Internships to many of our Foundation Learning students, offering a caring and nurturing environment, across several business support environments within the hospital.

Students will work within the hospital environment for five half days, gaining invaluable employability skills to aid their transition into the workplace in the future. They will spend their remaining four half days in college where they will continue with their learning and education.



BURSARIES & FINANCIAL SUPPORT

At Yeovil College, we understand that finance can play a big part of the decision-making process and we do not want the costs associated with studying to prevent you reaching your career potential.

Financial Support:

If you're under 19 years old and studying at Yeovil College, then your study programme is FREE. There may also be some additional financial assistance available to you, for example our 16-19 bursary fund. The bursary fund is available to students whose parents collectively earn under £50,000 per annum.

16-19 Bursary Fund:

Yeovil College has funds to aid students facing financial obstacles and to support students with the general cost of studying such as books, travel, equipment and technology. Even if you were studying at a different college before coming to Yeovil, you may still be eligible for this funding. Our bursary allocation is limited, and allocated on a first-come, first-served basis; if your family income is less than £50,000 per annum, it is therefore important that you apply for a bursary as soon as the application process opens.

Advanced Learner Loan:

If you're aged 19 or above, have been a resident in the UK for three years prior to the start of your course and are interested in studying a Level 3 qualification or higher, then you may be eligible for help with your fees via the Advanced Learner Loan. Application is easy and it does not take your household income into account. Repayment of the loan only starts when you are earning more than £22,015 per year.

Advanced Learner Loan Bursary Fund:

The Advanced Learner Loan Bursary Fund supports students who have an approved Advanced Learner Loan in place to cover the fees for their course and have a household income of £0 - £36,000*. It can be used for childcare, travelling costs, additional learning support and hardship.

Resource Fee:

An additional fee is applicable to the majority of full-time programmes, charged at different rates, depending upon the requirements of your study programme. This is the payment for curriculum areas to allow you to practise safely and professionally. Payment is due upon enrolment and will be discussed during New Students' Day and over the enrolment period.

Free School Meals:

All students aged between 16-18 whose families are on low incomes or are in receipt of specific benefits will be entitled to free school meals at Yeovil College. For detailed information, contact iZone@yeovil.ac.uk.



*Subject to change



TRAVELLING TO COLLEGE

Some learners are dropped off and collected in taxis, or by their parents/guardians and our teaching team meet and greet everyone, everyday, which always make our students feel welcomed and valued.

Drop-off & Collection Point

For students who are unable to travel independently, we have a dedicated drop-off and pick-up point. This area is monitored by Foundation Learning staff who will meet and greet you.

Travelling by Car or Taxi

We are easy to reach by road, via several routes. If you require a taxi to college, this must be arranged directly with the local authority.



Yeovil
College

Travelling by a Yeovil College Bus

We have invested within a fleet of direct buses, servicing several routes across South Somerset and North and West Dorset.

Student Bursaries

Students can apply for travel bursary to help cover the cost of bus travel to and from College.



DIRECT BUS TRAVEL



Travel directly to Yeovil College via one of our direct buses. To apply, you will need to complete the relevant bus application form available on our website. Find out more by scanning the QR code.

1a

YC1a Bus Route – Sturminster Newton, Stalbridge and Templecombe to Yeovil College.

Pick-up/Drop-off points: Please visit our website for specific and up-to-date information.

1b

YC1b Bus Route – Shaftesbury and Gillingham to Yeovil College

Pick-up/Drop-off points: Gillingham Railway Station, Gillingham (Park Farm N/ Bound), Shaftesbury Town Hall, Henstridge (Virginia Ash), Milborne Port (Queen's Head), Sherborne (Coldharbour), Yeovil College.

2

YC2 Bus Route – Wincanton and Castle Cary to Yeovil College

Pick-up/Drop-off points: Wincanton, West Hill (opposite King Arthur's School), Ansford Churchfields (opposite Bowls Club), Castle Cary (The Horsepond), Queen Camel (Outside Memorial Hall), Marston Magna (Bus Shelter), Yeovil College.

3

YC3 Bus Route – Bridport and Beaminster to Yeovil College

Pick-up/Drop-off points: Bridport (Post Office), Beaminster (Red Lion), Beaminster (Londis on Clay Lane), Broadwindsor (White Lion), Yeovil College.

4

YC4 Bus Route - Martock to Yeovil College

Pick-up/Drop-off points: Langport Town Hall, Martock, Huish Episcopi (Kellaways Bus Stop), Somerton (Behind Berry), The Ilchester Arms Hotel, Yeovil College.

5

YC5 Bus Route – Ilminster, Chard and Crewkerne to Yeovil College

Pick-up/Drop-off points: Ilminster (The Square), Chard (Boden Street), Crewkerne (The George Hotel), East Chinnock (The Wooden Top Pub), West Coker, Yeovil College.

6

YC6 Bus Route – Dorchester to Yeovil College

Pick-up/Drop-off points: Dorchester Trinity Street, Charminster, Charlton Down, Cerne Abbas, Mintern Magna, Yetminster, Bradford Abbas, Stoford, Yeovil College.





APPLICATION PROCESS

VISIT US

- High Needs & SEN Open Events
- College Open Events
- Yeovil Digital
- Experience Days
- Website
- Apprenticeship & Careers Fair
- 360° Digital Campus Tours
- Bespoke Events
- Campus Tours
- Taster Sessions

SELECT YOUR COURSE

You have several course options to choose from at Yeovil College. Speak to us, our careers team, your parents and your school to help inform your decision.

APPLY

- Online
- By Post
- In Person

NEW STUDENTS' DAY

All new Foundation Learning students will join us for their first full day at college. During this time, students will also enroll and start their induction process.

ATTEND SUPPORTED FAMILIARISATION & TRANSITION DAYS

We dedicate plenty of time to helping our students feel welcomed and comfortable, both at your current school and within our own site. This will be combined with tours, tasters and familiarisation sessions of our facilities both within the department and of the wider College.

FIRST WEEK

This is an exciting and fun week, focused on settling in, new routines, getting to know one another, exploring the College and setting new goals.

FUTURES FEST

We launch the new term with the largest careers fair in the county.



IT'S NOT TOO EARLY TO SECURE YOUR PLACE

Make your application as soon as possible to allow us more time to ensure a smooth transition to college.

Yeovil College has made every effort to ensure that the details contained in this prospectus are correct at publication. Yeovil College is not liable for any omissions or errors contained within this document. For full details please visit our policy section at www.yeovil.ac.uk or call 01935 423921.



Yeovil College, Mudford Road,
Yeovil, Somerset, BA21 4DR

01935 423921
iZone@yeovil.ac.uk
www.yeovil.ac.uk



This prospectus can be made available in other formats.